



EU policy & funding with focus on: Renovation Wave and Green Recovery

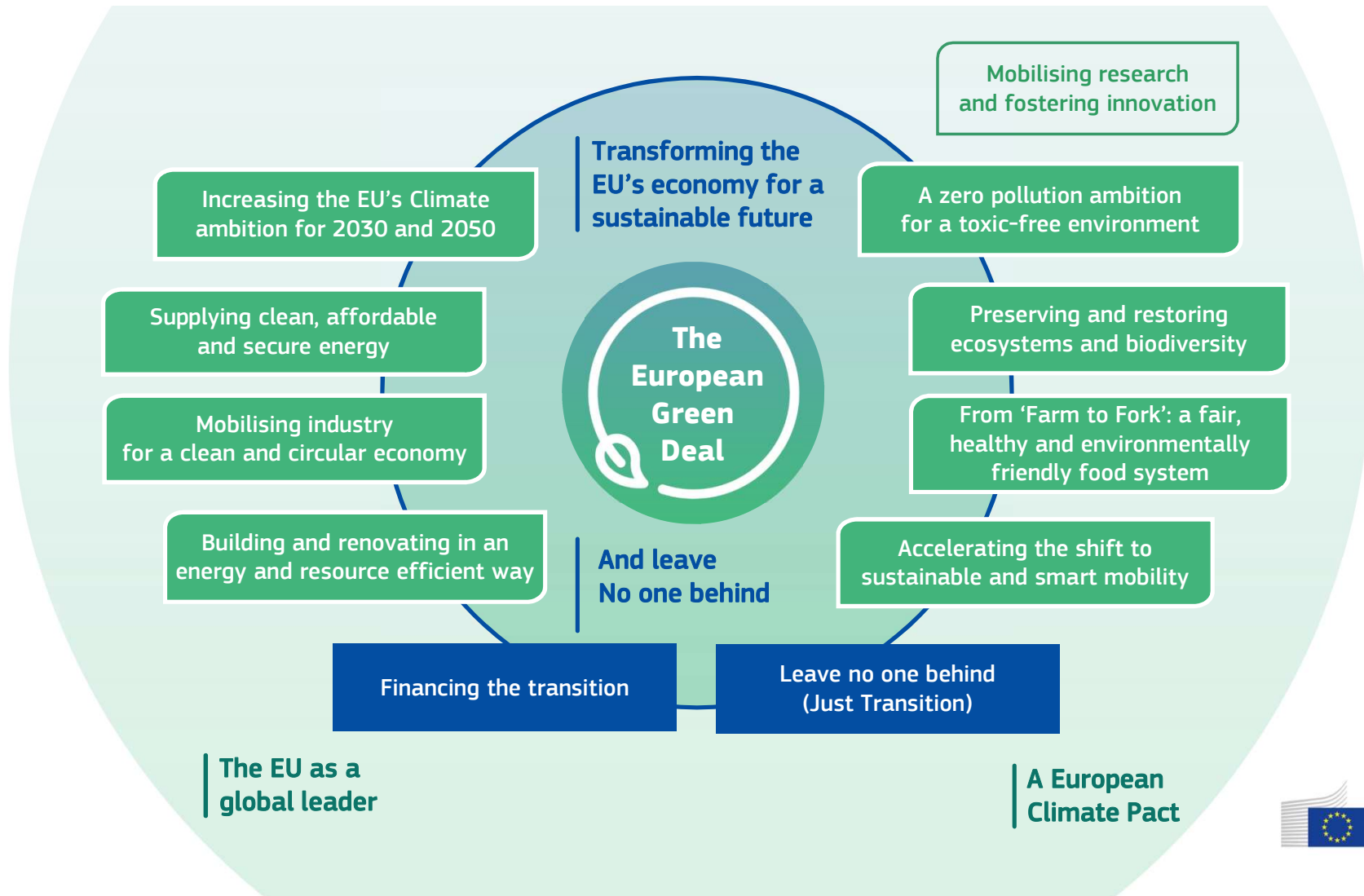
Sustainable Places 2020

27/10/2020

Margot Pinault, DG ENER

Policy Officer, Energy Efficiency Finance

The European Green Deal



The Climate Target Plan 2030

The Climate Target Plan 2030 sets a new **55%** emission reduction target and points to a need to tie together **renewable energy generation** and **energy efficiency** as essential component for action.

2030 EE target- status quo

- **an ambition gap of 3.1% to the target of 32.5% final energy consumption reduction**

Buildings:

- ❖ Currently, the annual weighted average energy renovation stands at **1%**.

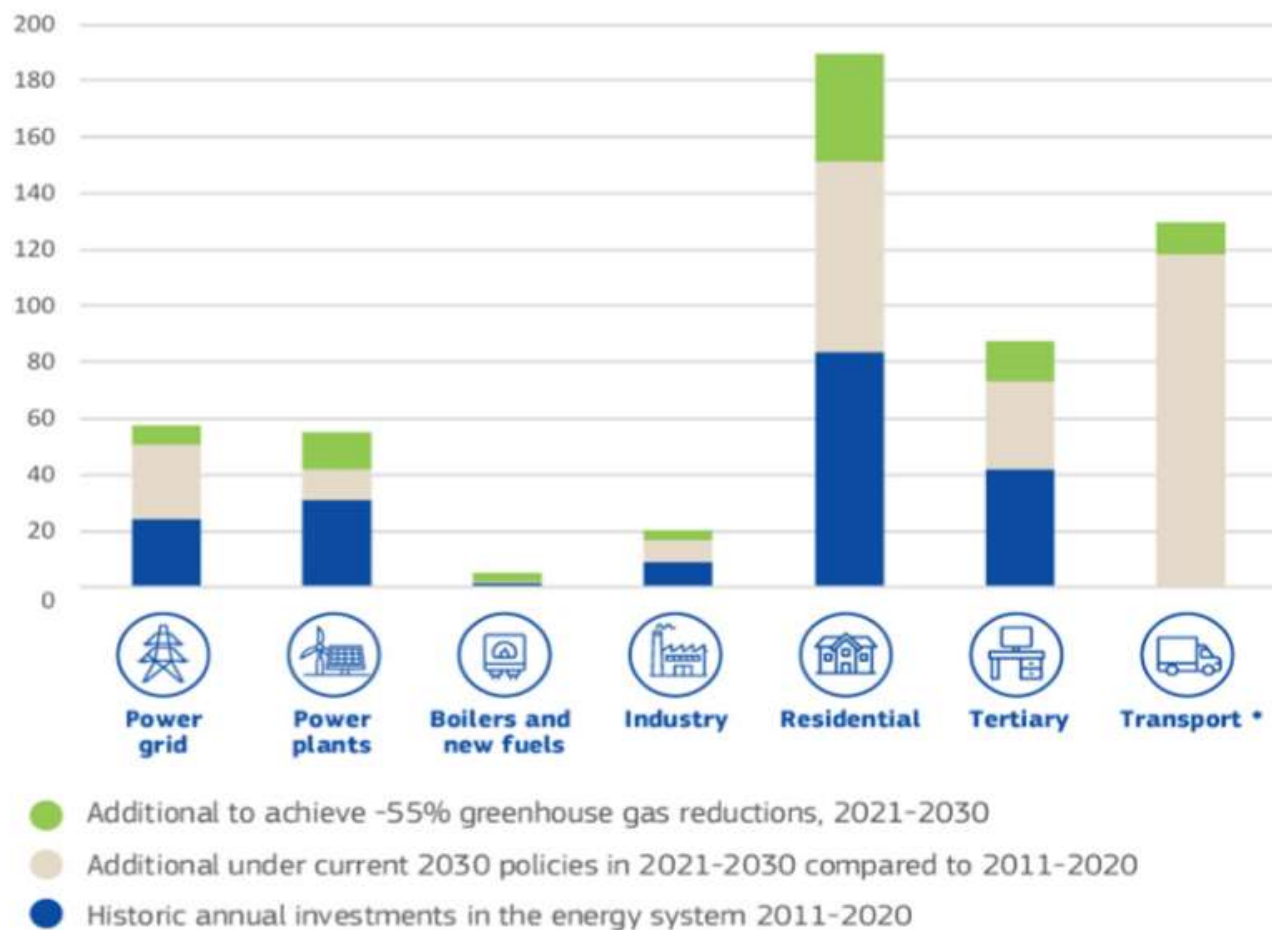
What is needed by 2030

- **Final energy consumption reduction of 36-37%**

Buildings:

- Renovation rates for buildings to at least double to **2%**

Average annual investment 2011-2020 and additional investment 2021-30
under existing policies and to achieve -55% greenhouse gas emission reductions
(in billion EUR 2015)



* transport only shows additional investment

Source: PRIMES model

Recovery Plan for Europe

a unique opportunity towards a climate-neutral economy

European Commission is proposing a **major recovery plan** based on using a powerful and modern EU budget to deliver a more sustainable Europe.



<https://audiovisual.ec.europa.eu:443/en/video/l-191551?&lg=OR>



To be committed
until the end of
2023

Recovery package & Next MFF 2021 -2027

An opportunity to scale-up investments in energy efficiency

Additional resources

- Out of the total 1.8 trillion euro (NGEU + MFF), 30% of these resources, **around 550 billion euro, earmarked to deliver the climate goals of the European Green Deal.**
- The resources dedicated to climate action have **more than doubled** compared with the period 2014-2020.

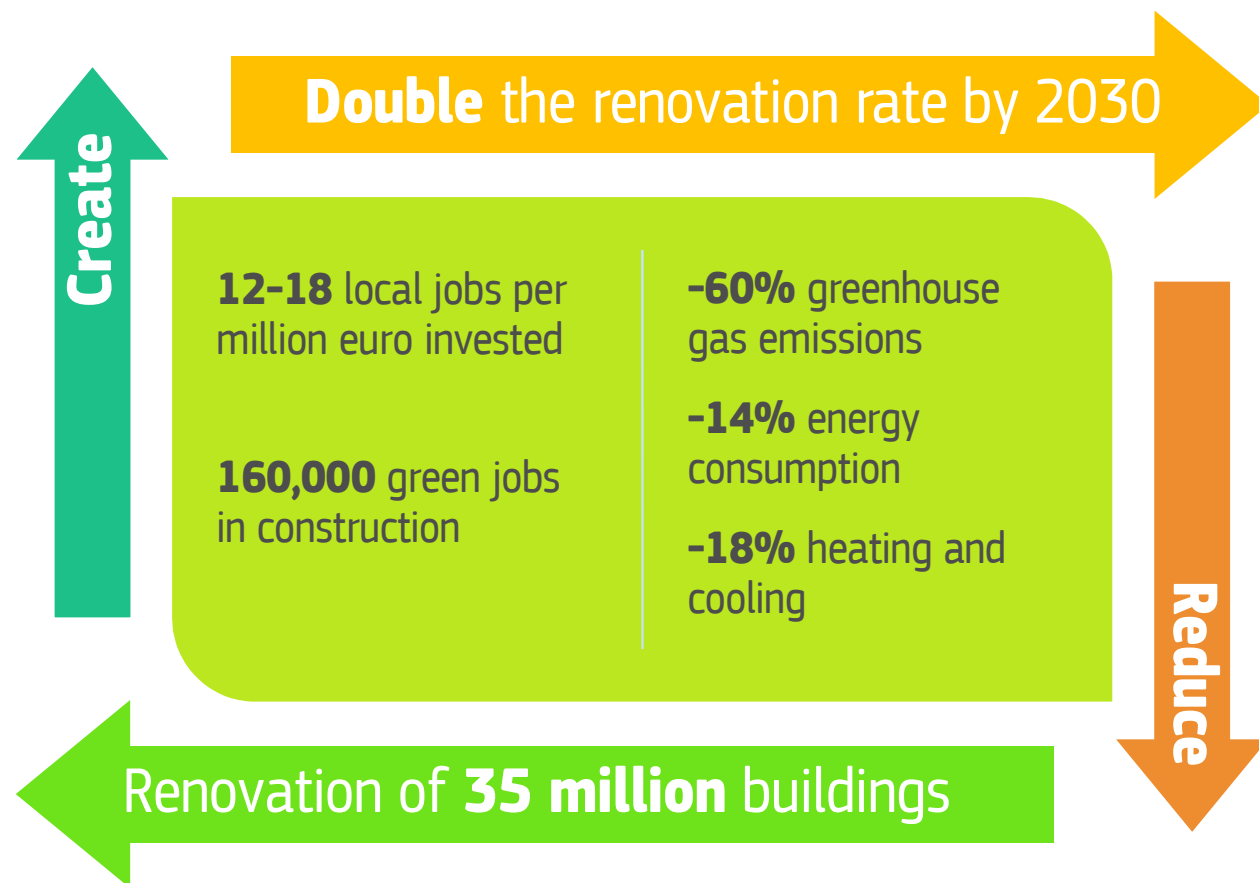
Multiple benefits

- Energy efficiency plays a **key role in clean energy transition.**
- Creates **local jobs, stimulates local investments, and supports SMEs** (who count for 95% of the construction sector in 2018).
- Strong energy efficiency policies **can contribute between 0.25 and 1.1% to GDP growth.**
- **In industry** generate productivity and operational benefits up to 2.5 times the value of energy savings.
- **Social and affordable housing** is a beneficial countercyclical intervention.

Renovation Wave Objectives

Policy package 14/10/2020:

- Renovation Wave
- Energy Poverty
- Smart Readiness Indicator



Renovation Wave

7 lead actions

Information, and
regulation

Accessible and
well-targeted
funding

Project and
technical
assistance

Integrated
interventions for
smart buildings



Construction
sector for the
sustainable future

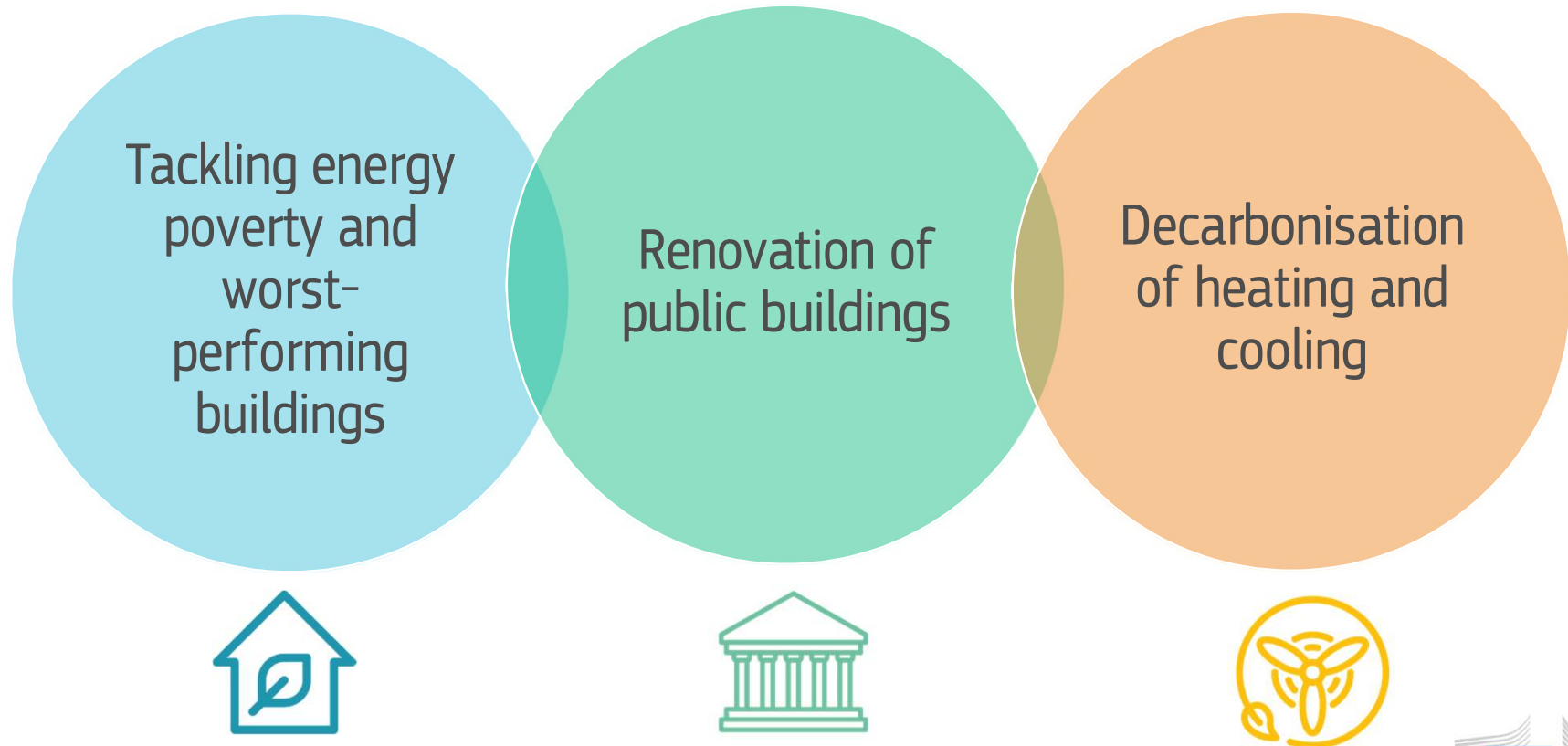
Addressing energy
poverty and
healthy housing

Decarbonisation
of heating and
cooling



Renovation Wave

3 focus areas



EU funding driving investment for renovations



Recovery and Resilience Facility (EUR 672.5 billion, 37% climate initiatives) and including European Flagships “**Renovate**”.



Cohesion Policy Funds (proposed budget of EUR 330 billion) better targeted on delivering high energy performance, in line with NECPs and LTRSs objectives.



InvestEU dedicated financial products for energy renovation of buildings and **EIB Initiative for Building Renovation** support for the aggregation into portfolios of building renovation projects.



Facilitate **blending solutions** for project promoters, including clearer and easier **State Aid rules** (Ongoing revision of the General Block Exemption Regulation and Energy and Environmental Aid Guidelines)

EU budget for the Renovation Wave

for Direct Investments

- Recovery and Resilient Facility
- Cohesion Policy Funds (ERDF, ESF, EU-REACT)
- Just Transition Mechanism - JTF

To leverage private investments

- InvestEU
- Private Financing 4 Energy Efficiency
- European Energy Efficiency Fund

for Research & Innovation

- Horizon Europe
- Built 4 people
- EGD Calls
- Smart Cities

To address Market Barriers

- LIFE – Clean Energy Transition
- LIFE – Circular Economy & Quality of Life

For Technical Assistance and Advisory

- ELENA Facility
- Technical Support Instrument
- Technical Support – Cohesion Policy



An environmental,
economic and cultural
project for Europe

Design,
Sustainability,
Investment

Bringing the European Green Deal
to life and develop an aesthetic
for the green transformation



**Press statement by
President von der Leyen on
the New European Bauhaus**

https://ec.europa.eu/commission/presscorner/detail/en/statement_20_1902

Horizon Europe Partnership on ***“People-centric sustainable built environment” the R&I co-creation space***

Scope:

Decarbonisation, sustainability and better living

Gathering partners across the building value chain

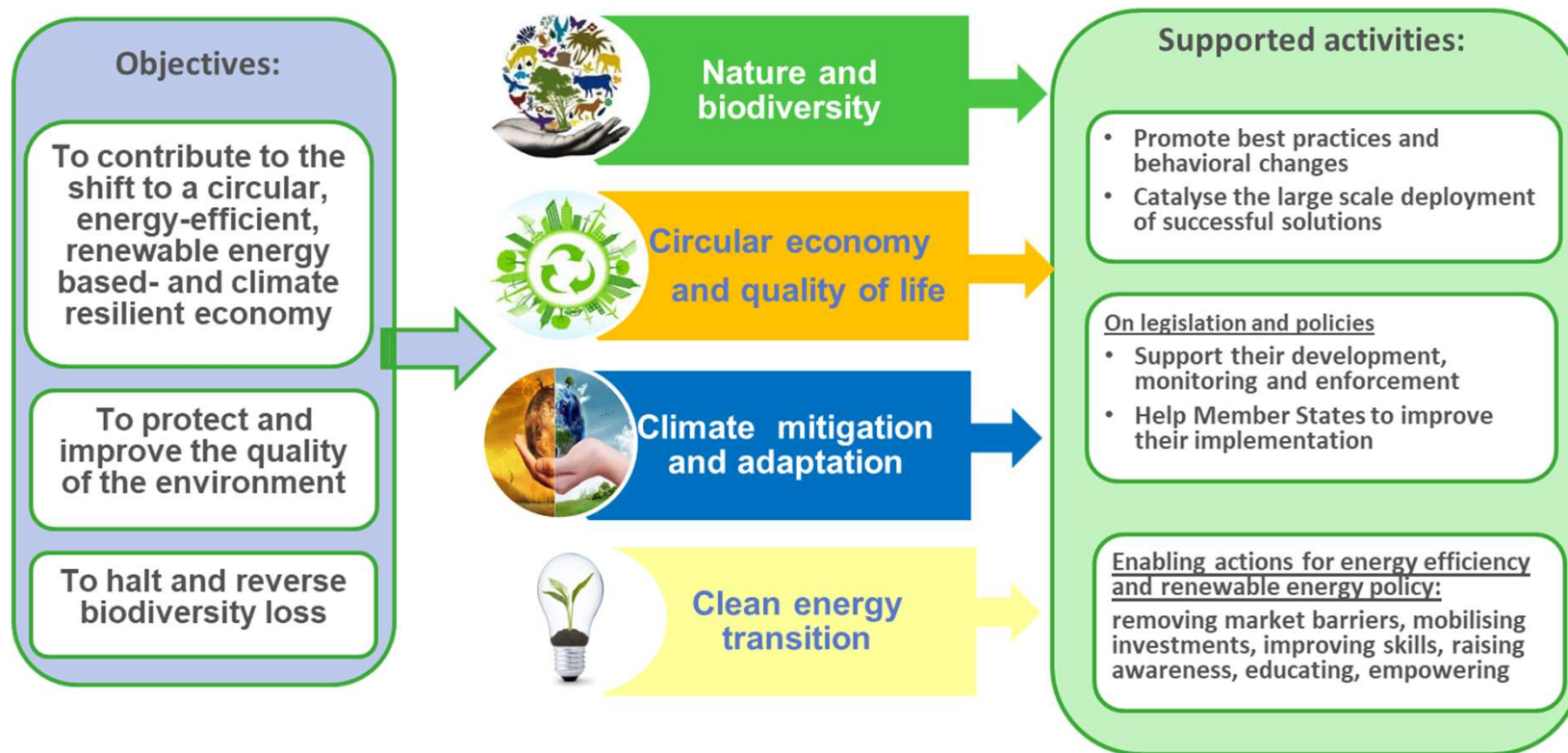
Approach:

People-centric holistic innovation aiming at high quality architecture for low carbon and highly energy and resource efficient built environment driving the societal and economic transition towards sustainability.



LIFE- Clean Energy Transition

- ✓ Continuation of market uptake actions building upon predecessor programmes Intelligent Energy Europe (2003-2013) and Coordination and Support Actions under Horizon 2020 Energy Efficiency (2014-2020).
- ✓ Tentative budget of €1 bn



Thank you for your attention



© European Union 2020

Unless otherwise noted the reuse of this presentation is authorised under the [CC BY 4.0](https://creativecommons.org/licenses/by/4.0/) license. For any use or reproduction of elements that are not owned by the EU, permission may need to be sought directly from the respective right holders.

