



Limerick · Trondheim · Alba Iulia · Písek · Sestao · Smolyan · Võru

Innovation Playgrounds

How cities can create the conditions for collaboration and clean energy innovation

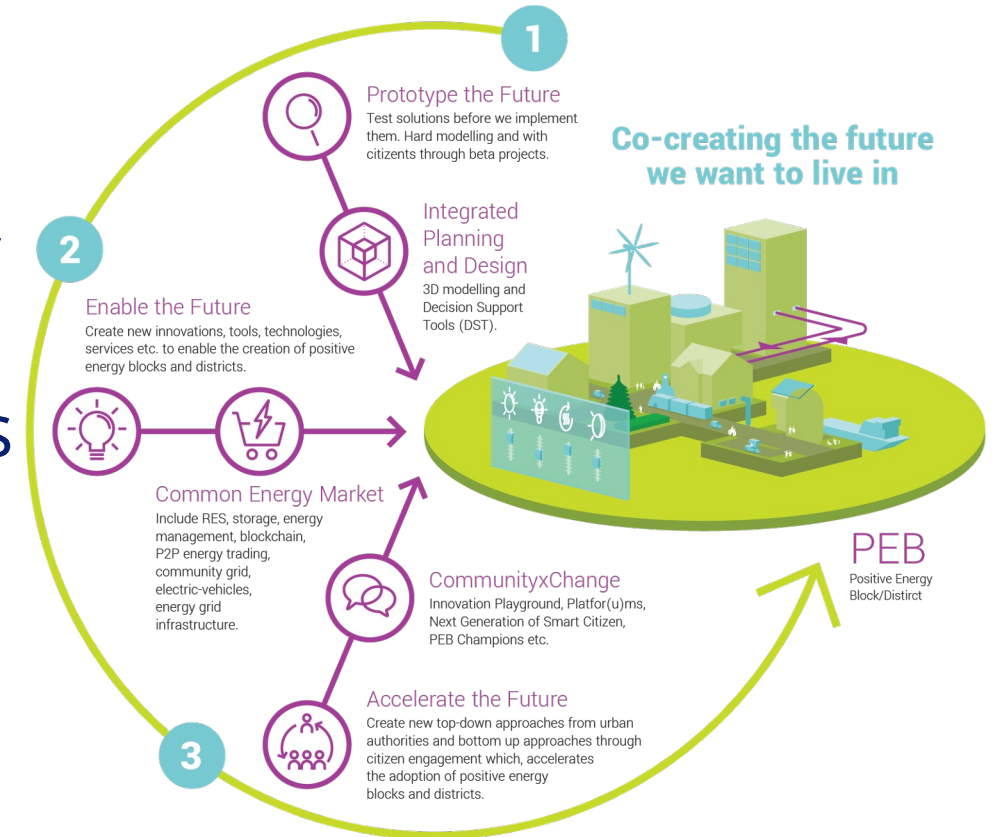
Sustainable Places | 08.09.2022 | helena.fitzgerald@ul.ie and dirk.ahlers@ntnu.no



This project has received funding from the European Union's Horizon 2020 research and innovation programme under grant agreement No 824260.

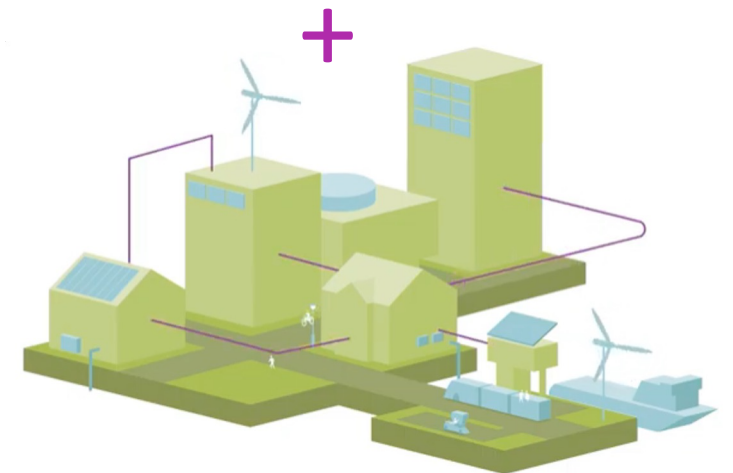
The +CityxChange Approach

- A localised energy transition through Positive Energy Blocks
- Links technical and community aspects
- Works with & across disciplines
- Works across strategic and operational levels
- Embeds open innovation and co-creation in the transition



Impacts at Multiple Levels

- Systemic/collective/individual behavior change
- Broad participation on direct and indirect energy issues
- Participation in co-creation and energy communities
- Innovation ecosystem – Innovation Playgrounds & Innovation Labs
- Bold City Vision – Changes in strategic city governance and transitions



+CITYXCHANGE

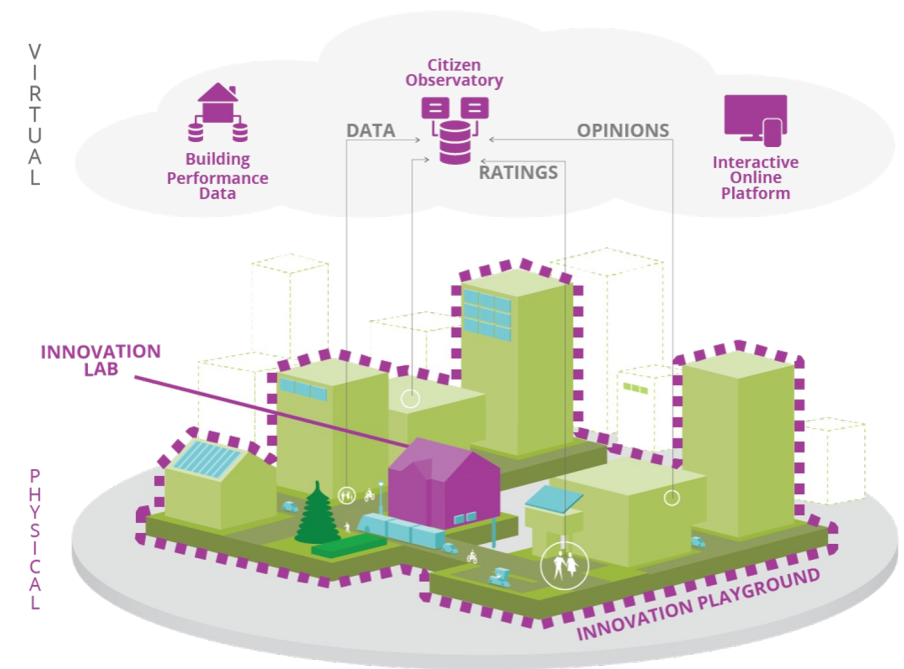
Innovation Playground



+CITYXCHANGE

What is an Innovation Playground?

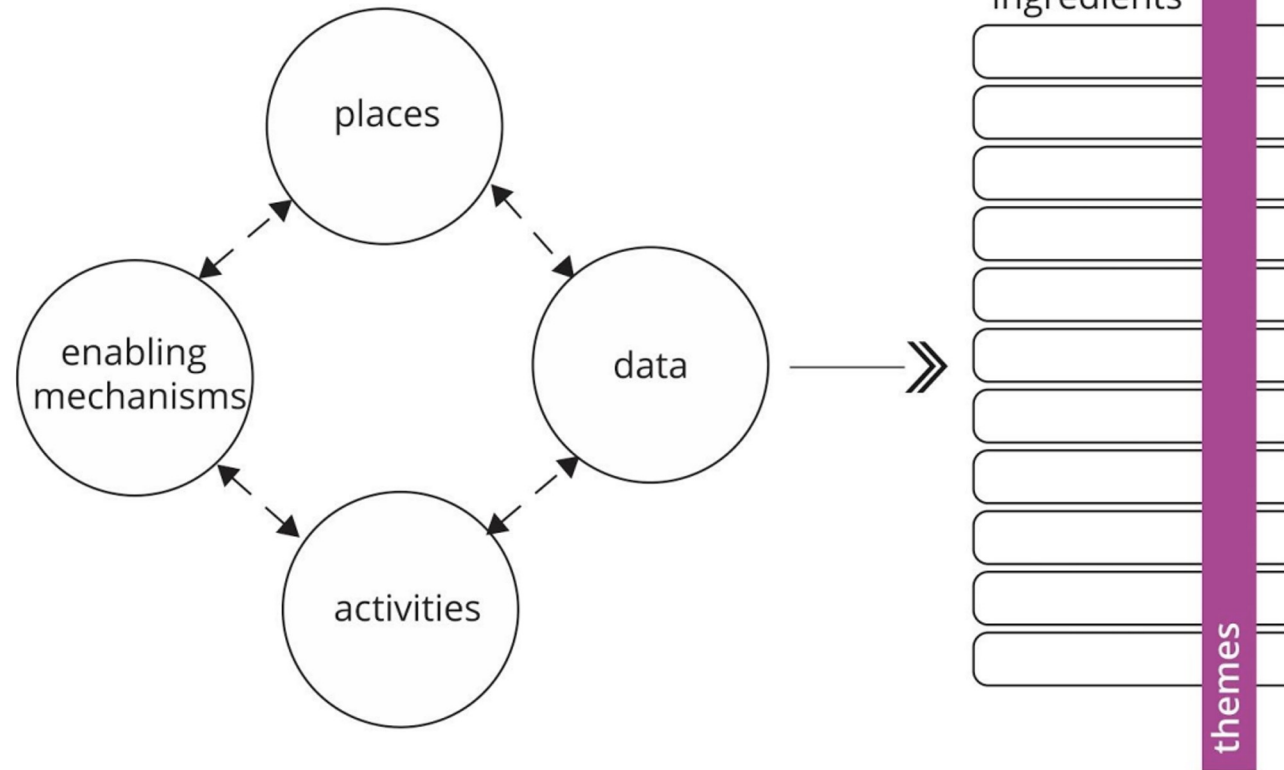
“An Innovation Playground... is a designated area of a city where different **physical** and **virtual** places and **activities** relating to innovation are brought together into a **coherent whole** to facilitate collaboration, empower citizens, and find new ways of addressing challenges that matter to people.”



FRAMEWORK FOR AN INNOVATION PLAYGROUND

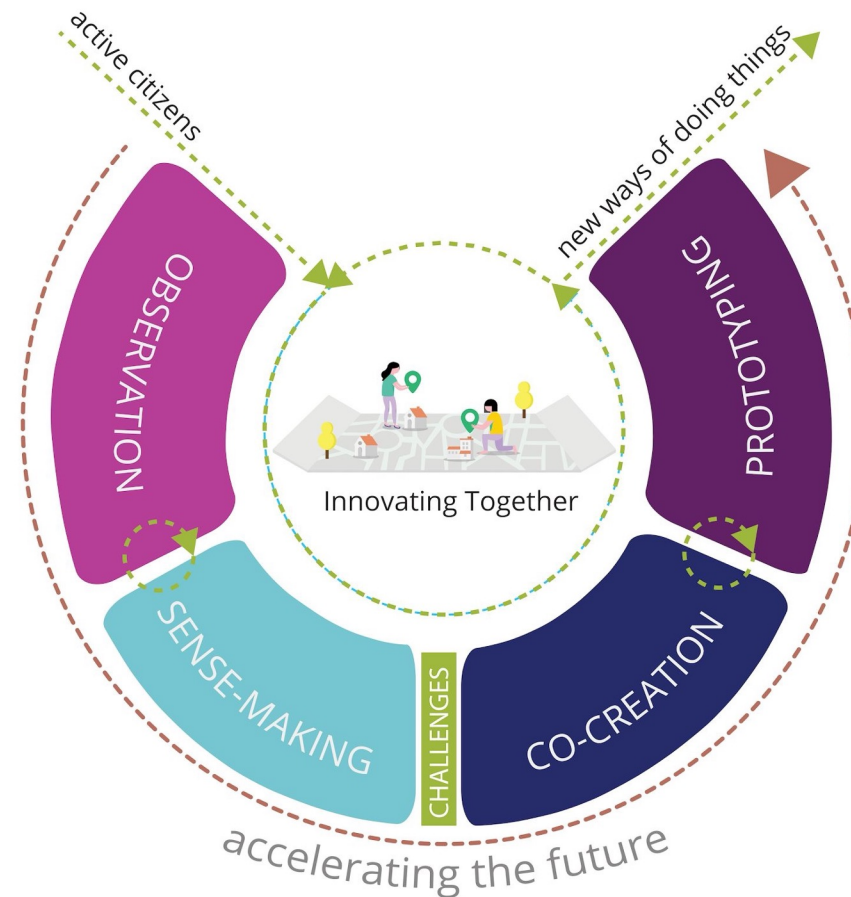
innovation playground system

localised innovation playground



+CITYXCHANGE

Innovation Playground Journeys



+CITYXCHANGE

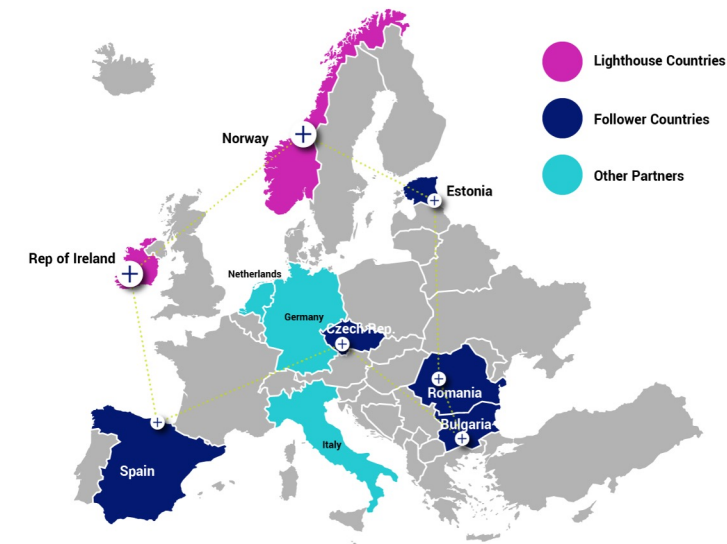
CommunityxChange

Six concepts to enable top-down and bottom-up engagement:

- Bold City Vision
- Citizen Participation Playbook
- Innovation Playground
- Learning Framework - Next Generation Smart Citizen
- Positive Energy Champion Network
- DPEB Innovation Lab

<https://cityxchange.eu/knowledge-base/>

Made with cities for cities



LHC Trondheim



LHC Limerick



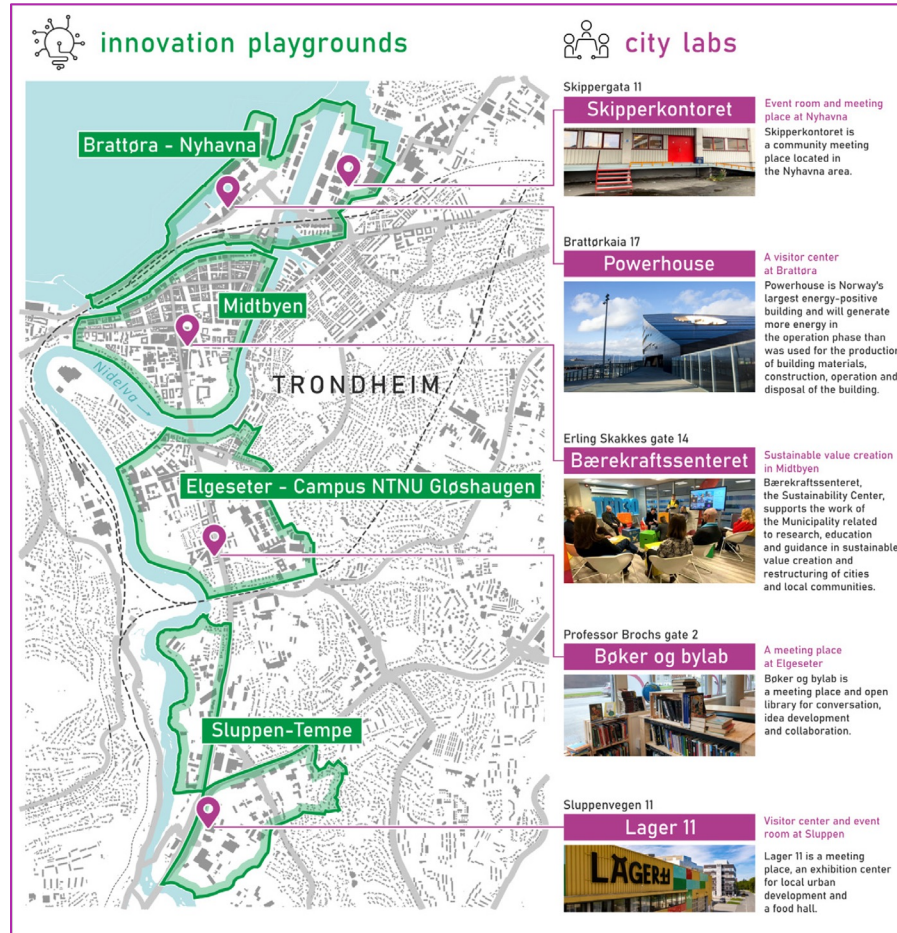
Creating an Innovation Playground

Making the
intangible
tangible.



+CITYXCHANGE

Innovation Playgrounds

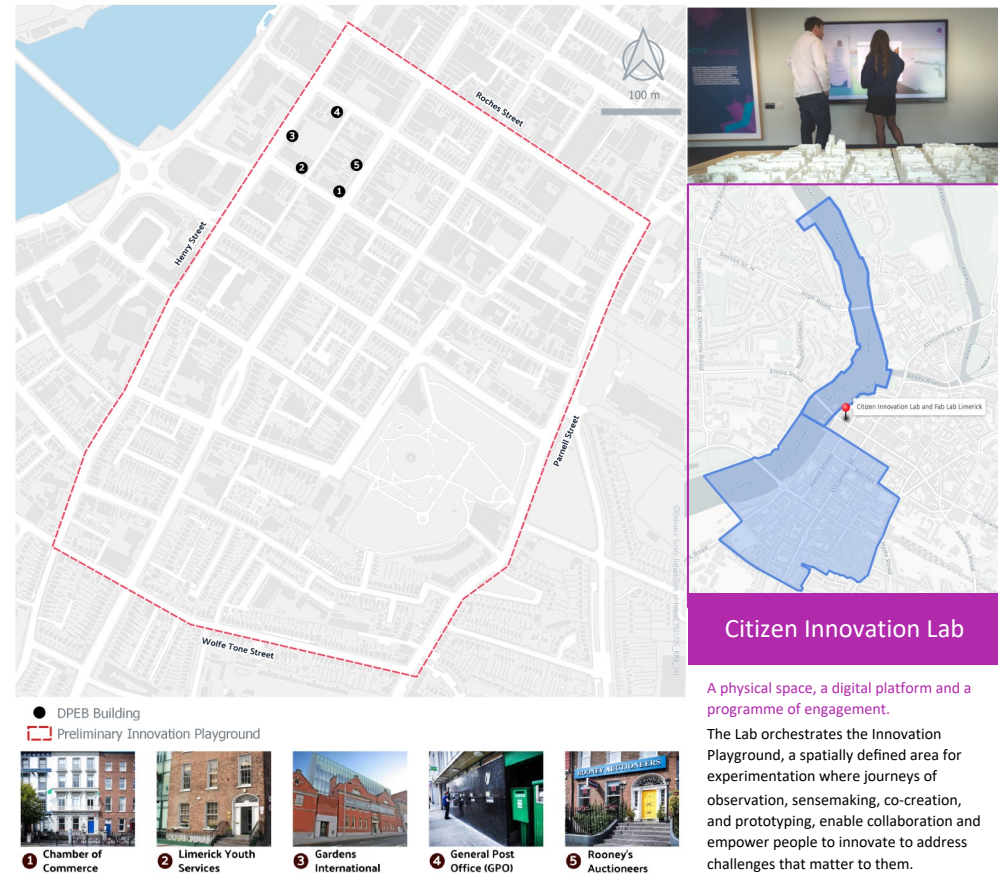


Innovation Playgrounds and City Labs in LHC Trondheim

(Source: Tomasz Opach)

+CITYXCHANGE

Preliminary Limerick Innovation Playground



Preliminary Innovation Playground and Citizen Innovation Lab in LHC Limerick.

(Source: LCCC and UL)

Orchestration

Positive Energy Champion Campaign Limerick

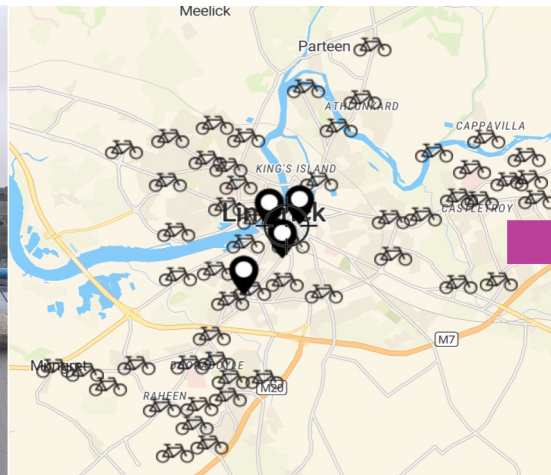
Bold City Vision
Participation Playbook
Innovation Playground
Learning Framework
Positive Energy Champion Network
DPEB Innovation Labx



PED Stakeholders play the City Energy Game at City Engage Week. Open Innovation Call projects



Úna wants more choice for sustainable transport options in Limerick. She meets Limerick's Mayor.



Uses the Community Mapping Tool to crowdsource a map of a future bikeshare scheme

LIMERICK
Council

COUNCIL > SERVICES > YOUR COUNCIL > STRATEGIC POLICY COMMITTEES

SPC Travel & Transportation

The Travel & Transportation Strategic Policy Committee is responsible for all areas of policy and strategy concerning Roads/Transport Infrastructure and Travel modes.

The Transportation & Mobility Directorate has administrative responsibility for this committee.

Data discussed at a transport SPC meeting and used to inform procurement by Limerick City and County Council

Mapping the Air Qualit...
Alan Bell
To map localised air quality levels in and around the Georgian Quarter. We would like to provide...

Empowering Communities
Úna Walsh
My plan as a Positive Energy Champion is to help empower communities. I believe the only way we c...

Solar Car-Port
Metaltech Ltd
To install a solar charged carport to generate clean, renewable energy. This energy can then be u...

Greening The Smart Grid
Community Power Ltd
To energise the citizenry of Limerick City to become actively involved in the energy transition a...

Úna shares her story on the Citizen Innovation Lab Repository





+CITYXCHANGE

No 1 Pery Square Pery Square, Limerick



The team at No 1 Pery Square have become Positive Energy Champions to promote awareness of energy efficiency and to demonstrate the positive effects of reducing CO₂ emissions. They are focused on introducing sustainable practices throughout the business. The aim of the project is to assess and improve the energy use of the hotel.

Sim auxiliary energy (kWh / m ² per year)	72.59 *
Sim cooling energy (kWh / m ² per year)	0 *
Sim dhw energy (kWh / m ² per year)	89.42 *
Sim equipment energy (kWh / m ² per year)	3.8 *
Sim heating energy (kWh / m ² per year)	57.36 *
Sim lighting energy (kWh / m ² per year)	13.23 *
Sim total carbon (CO ₂ kg/m ² per year)	59.13 *
Sim total energy (kWh / m ² per year)	236.4 *

See full user story

<https://www.limerick.ie/cityxchange/positive-energy-champ>

www.iesve.com



Engaging with the City Energy Model/Digital Twin

Orchestration

MASS Development Trondheim

Bold City Vision
Participation Playbook
Innovation Playground
Learning Framework
Positive Energy Champion Network
DPEB Innovation Lab



UN SDGs at an Elgeseter festival, and a co-creation event at the Sustainability Centre meeting space

STEP 1:
Let's start by thinking about YOU and YOUR WORK.
Which of the SDGs are most relevant for what YOU work with?
Please write it on a post-it note!

STEP 2:
Group the SDGs into themes, according to what YOU think makes the most sense together.
All of the SDGs are interconnected, however if some are more closely connected, group those together and give it a title.

16 Sustainable cities and communities

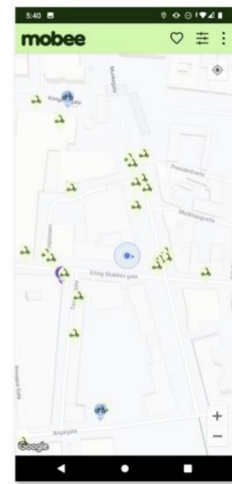
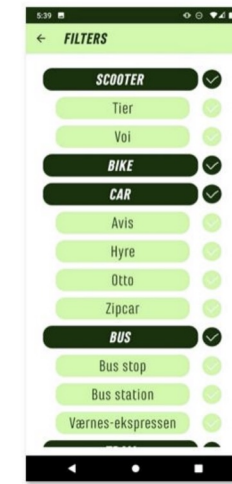
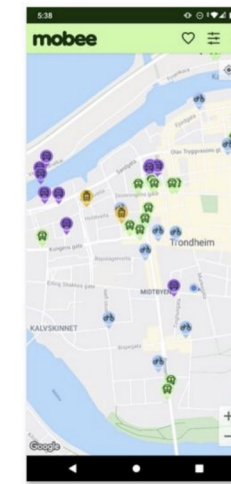
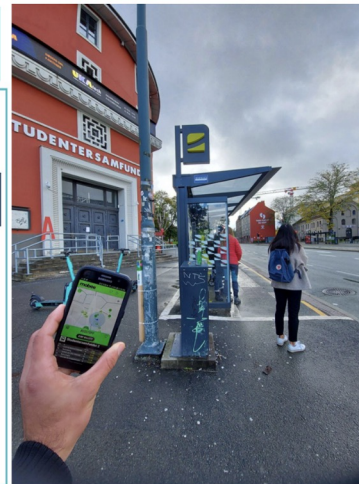
Theme 1: _____

Theme 2: _____

Theme 3: _____

Theme 4: _____

Theme 5: _____



Bold City Vision for Mobility Workshop

Mobee Scavenger Hunt

Mobee App User Interface

+CITYXCHANGE

Mobee brand and mobility solution from
D5.10 Trondheim Innovation Lab
Solutions Catalogue
<https://cityxchange.eu/knowledge-base/>

Q&A.



+CITYXCHANGE