



# EASME

Executive Agency for Small and Medium-sized Enterprises

## EU support for Smart Buildings under Horizon 2020

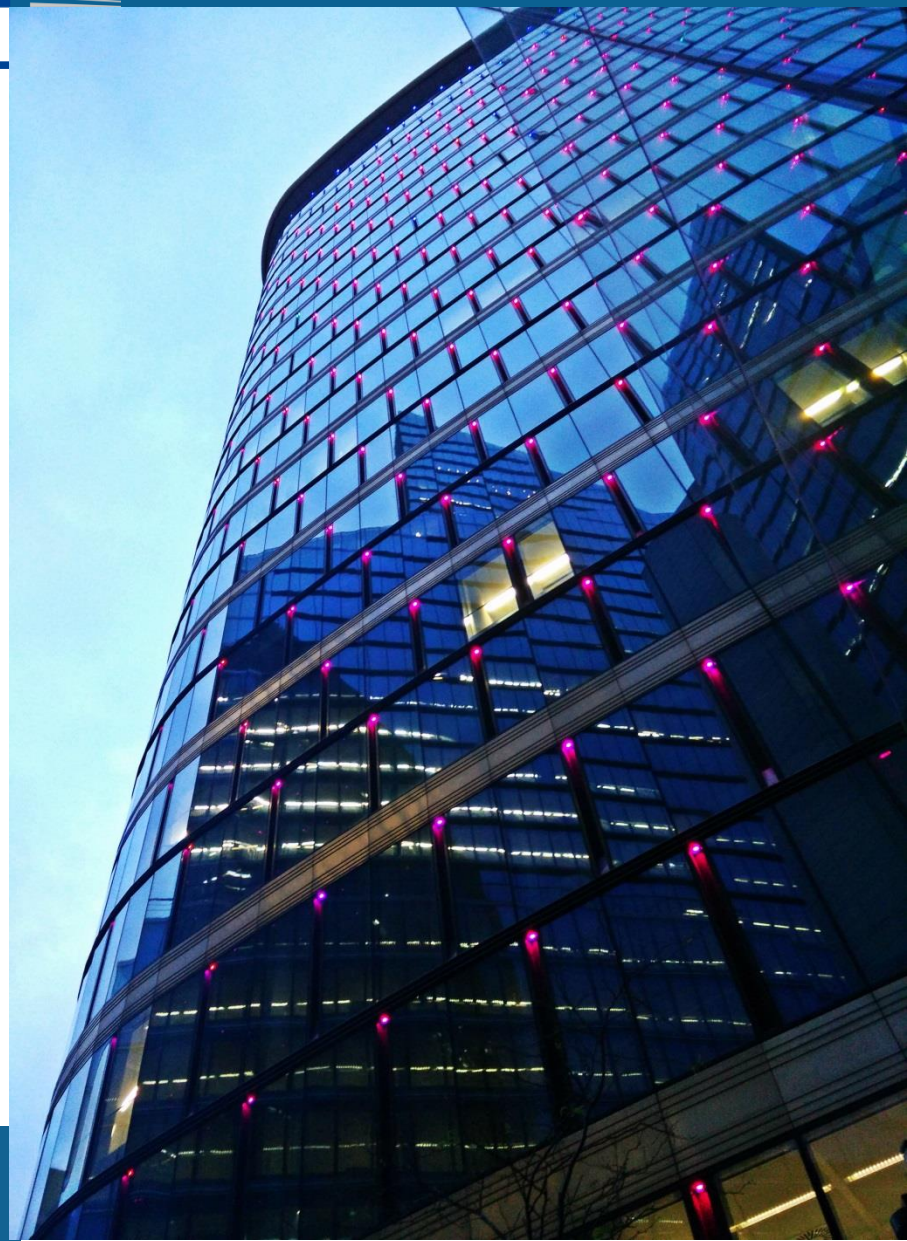


**Philippe MOSELEY**

Project Advisor

Horizon 2020 Energy Unit (Buildings)

Executive  
Agency  
for SMEs

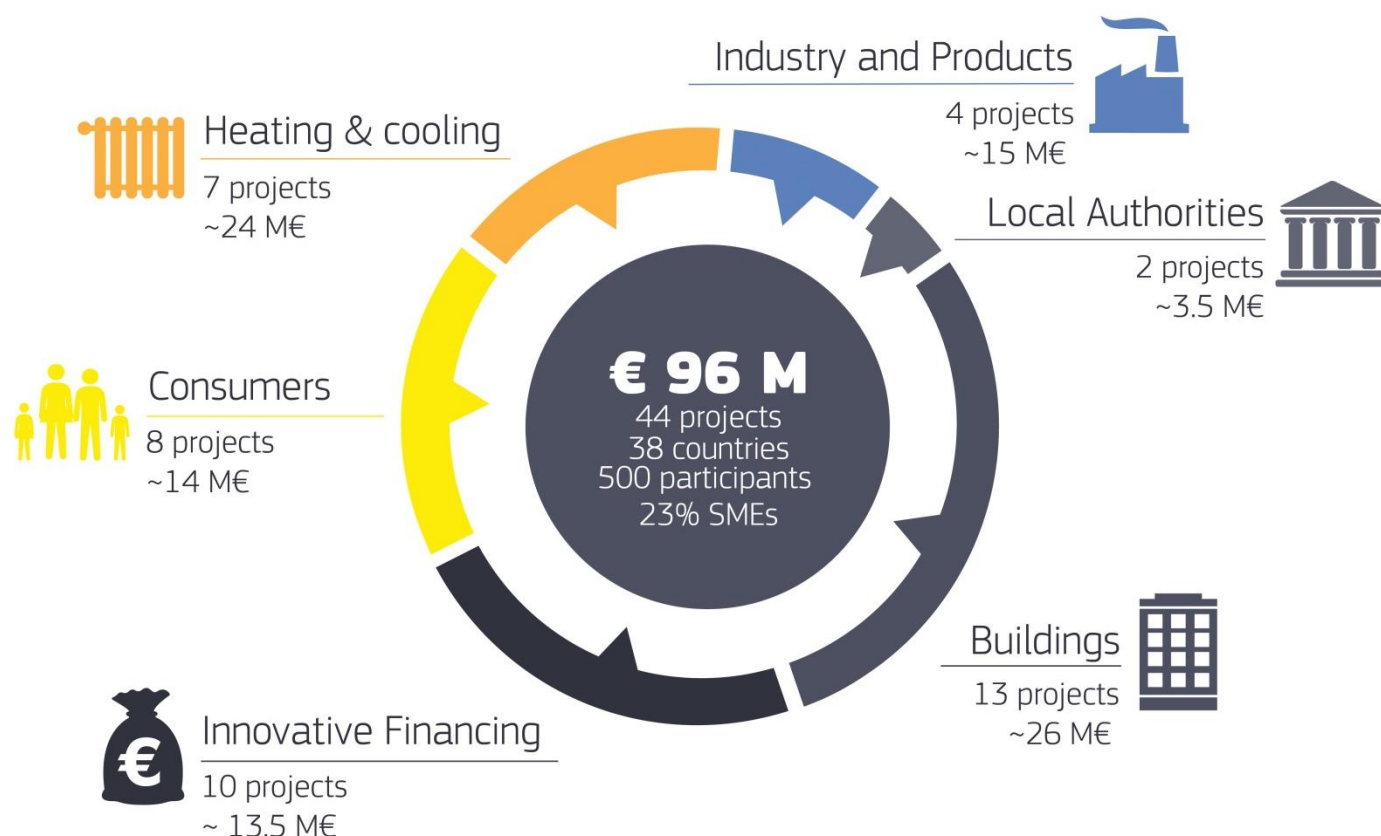


## EASME's role within the European Commission

- Manage EU programmes
- Feed project outcomes into EU policymaking



# H2020 Energy Efficiency 2016 call results



# Research question

"How is Europe's Horizon 2020 framework programme supporting research, innovation and market uptake of smart buildings?"

# Methodology

EPBD Reivew proposal: Smart Readiness Indicator  
for buildings

Ability of a building to:

- (1) interact with its users
- (2) manage itself efficiently
- (3) interact with the wider energy environment

# Methodology

Building's ability to interact with users				
Full automation	User interface	Control of entire building	Control of individual appliances	Implicit Demand Response

Building's ability to manage itself						
On-site storage	Heating and cooling	Lighting	Domestic Hot Water	Domestic appliances	Self-learning / AI	Optimization

Building's ability to interact with the energy environment			
Interoperability & communication	Electromobility & smart charging	Data privacy & protection	Explicit Demand Response



# CORDIS

## Community Research and Development Information Service

[European Commission](#) > [CORDIS](#) > [Search](#) > [Advanced](#)

**Search**

 **Sign in**



**NEWS & EVENTS**

**PROJECTS & RESULTS**

**RESEARCH\*EU MAGAZINES**

**PARTNERS**

### Filter by

**All content types**

**Projects only**

Search terms

Acronym

ID

Record number (RCN)

Title

Start date

anytime



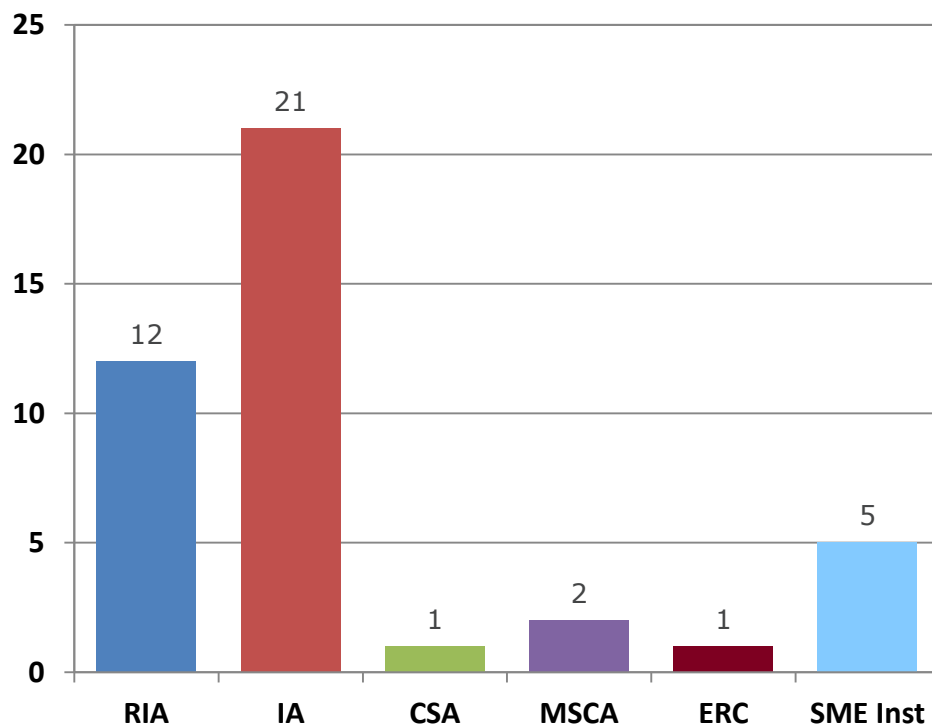
*From*

*to*

*From*

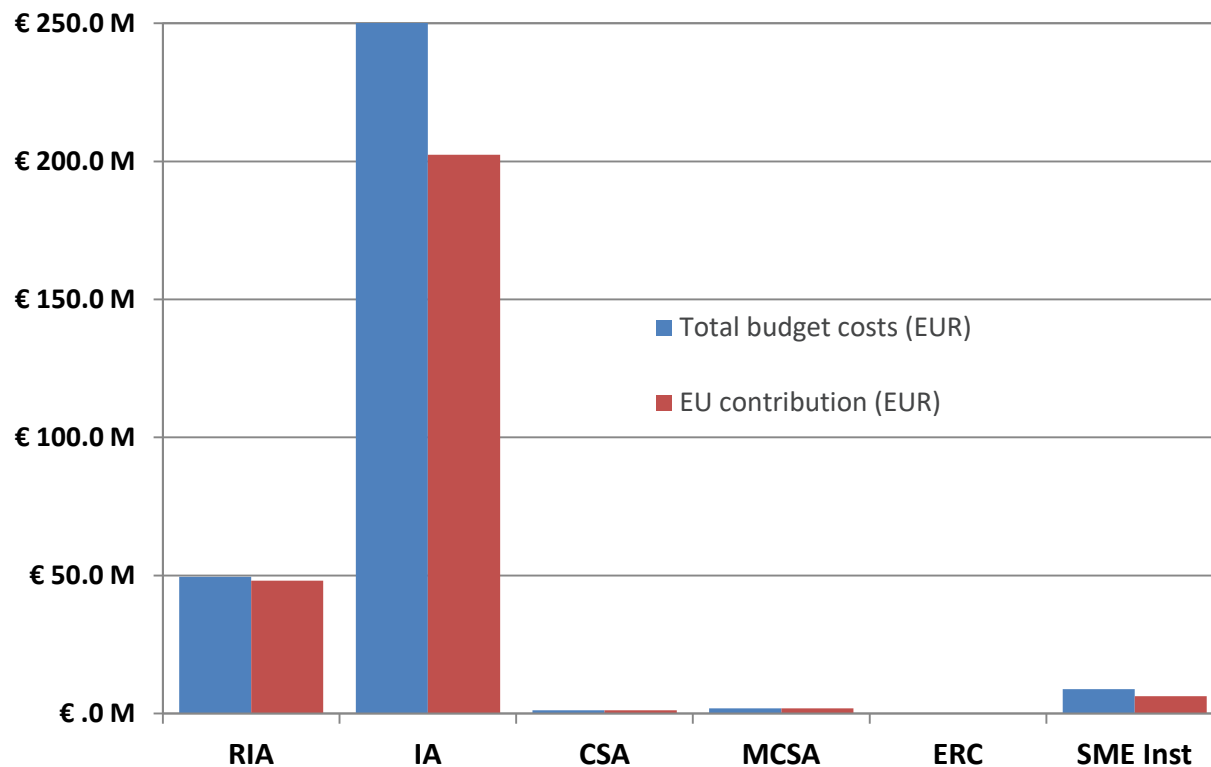
*to*

# Number of projects by funding scheme

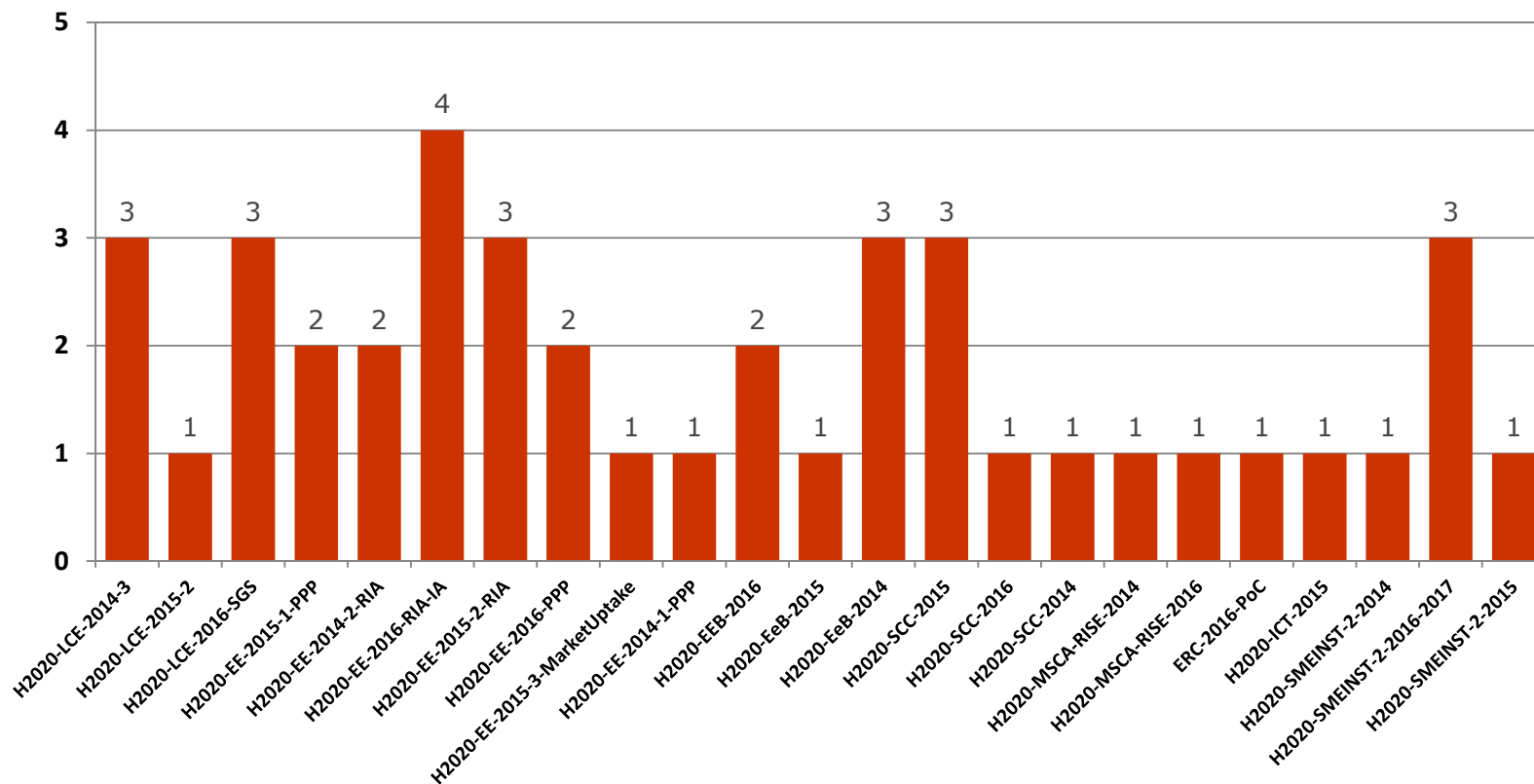




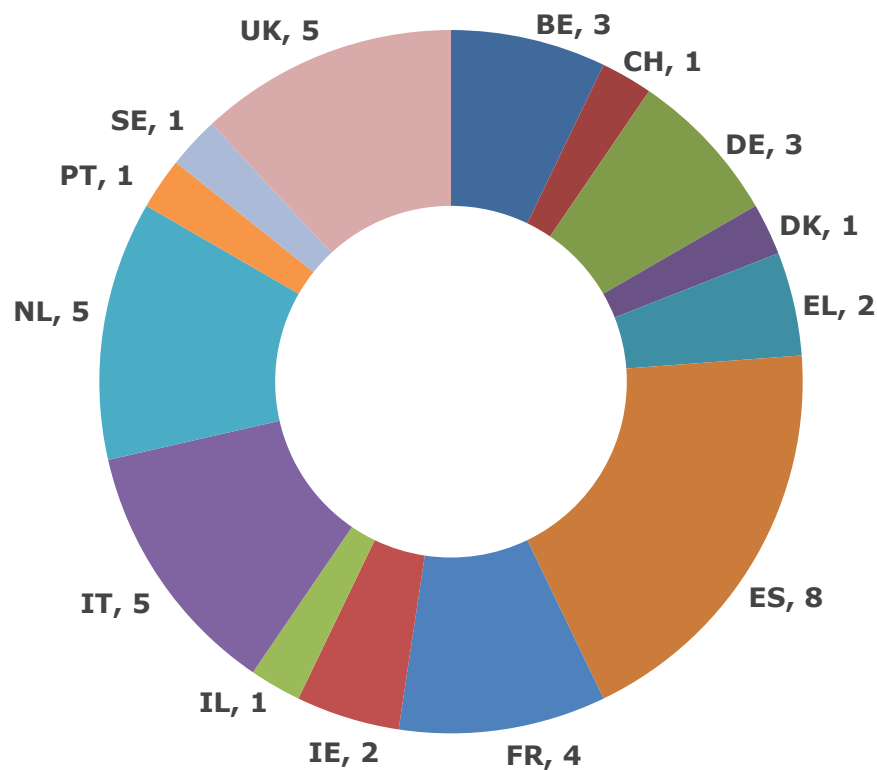
# Budget/EU contribution by funding scheme



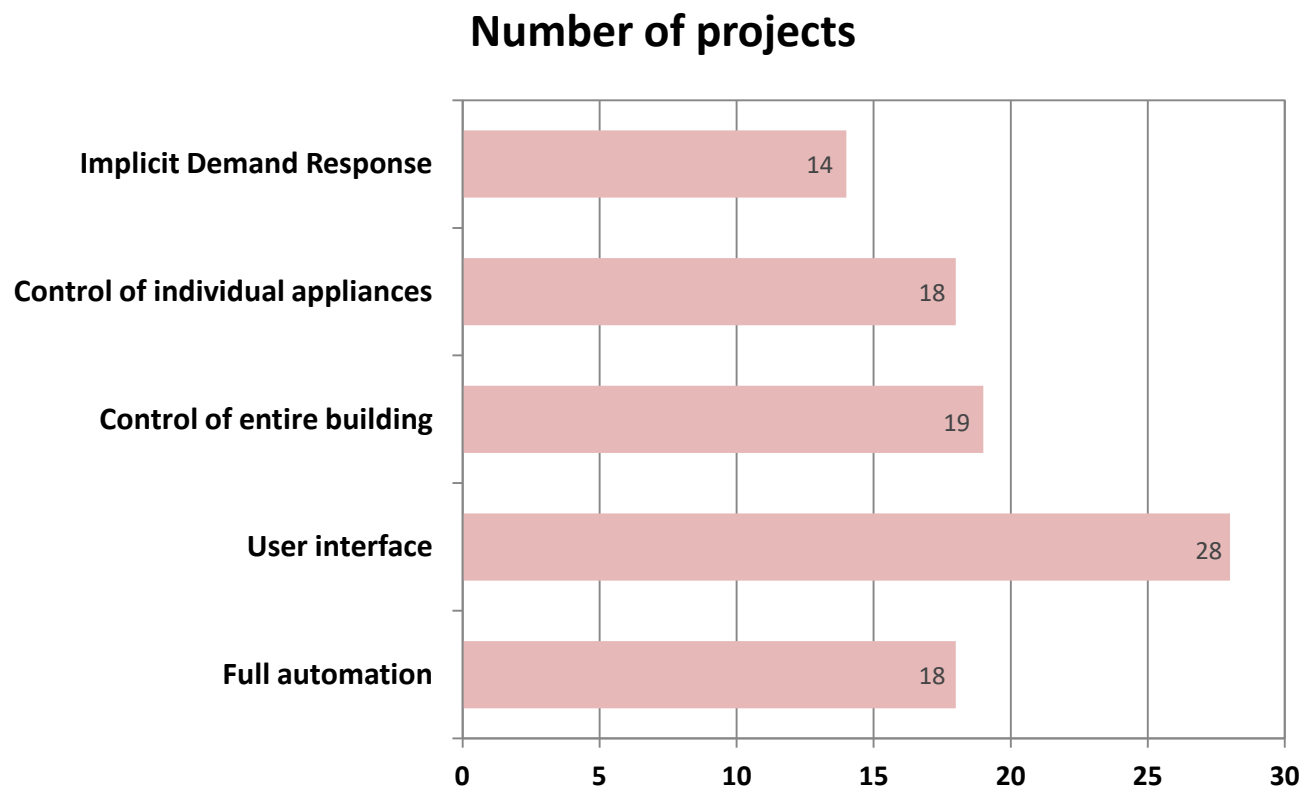
# Number of projects by Call



# Number of projects per coordinator's country

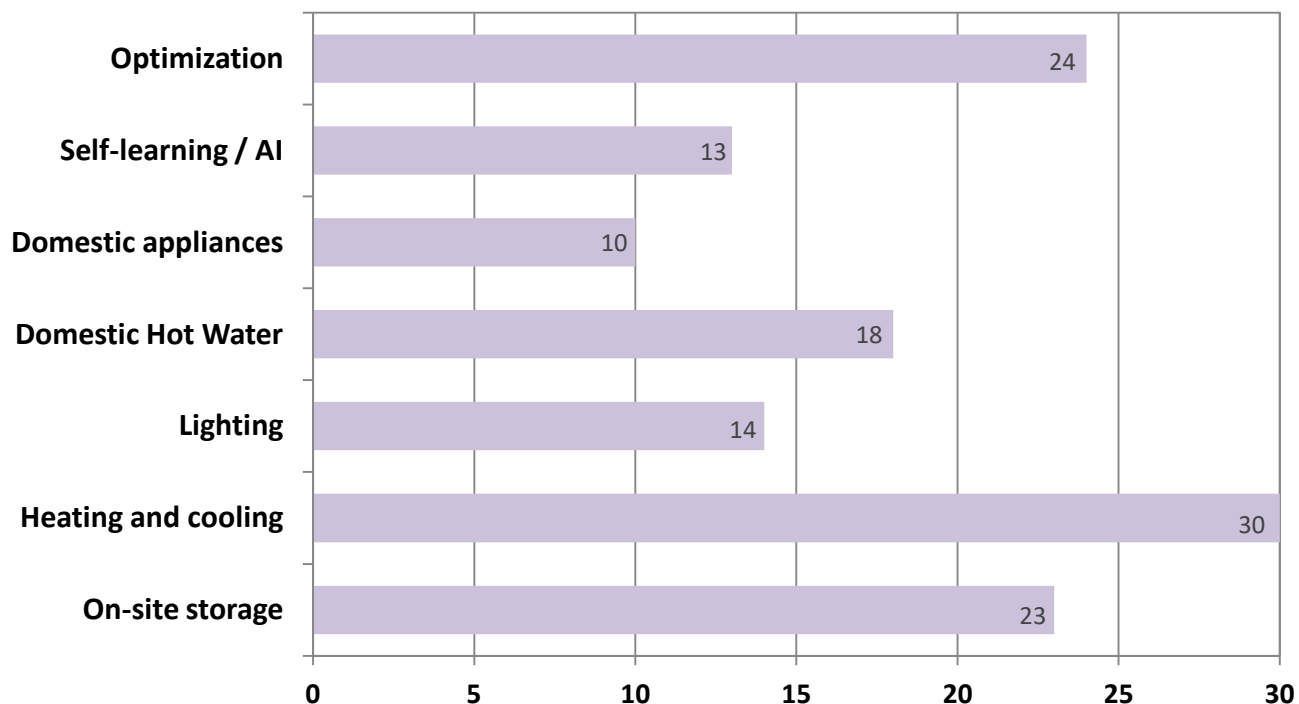


# Building's ability to interact with users



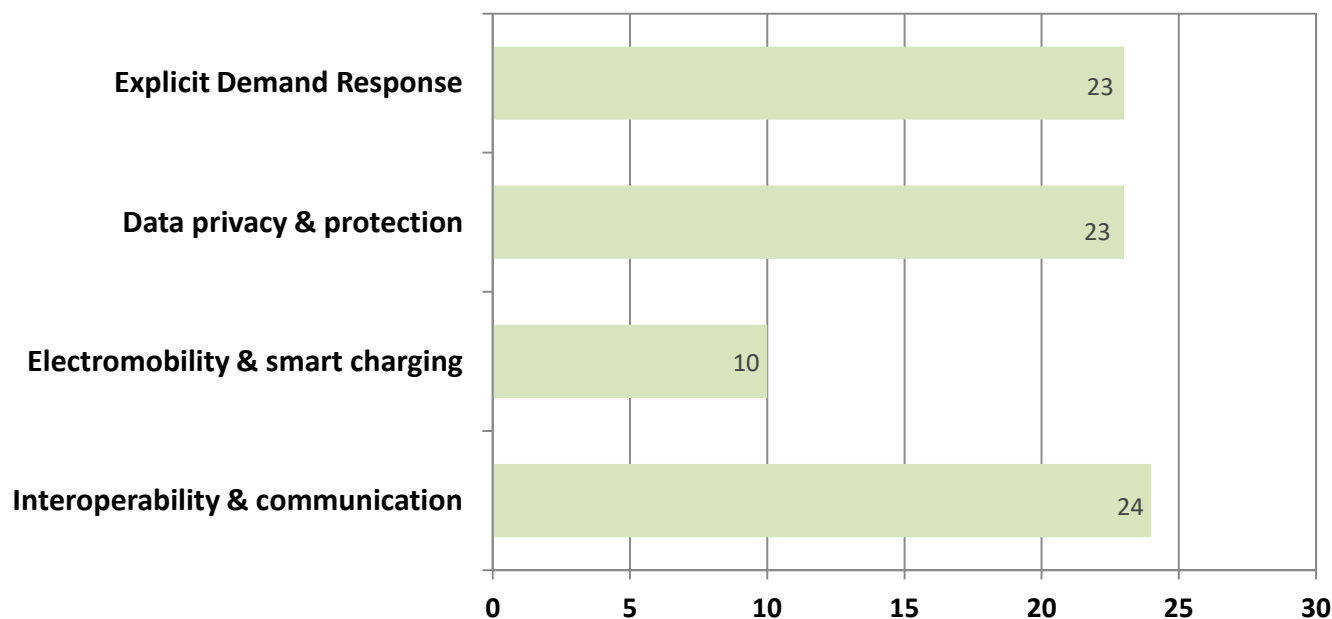
# Building's ability to manage itself

## Number of projects



# Building's ability to interact with the wider energy environment

Number of projects



# Conclusions

- As of May 2017, Horizon 2020 has supported 42 actions relating to smart buildings
- Total costs of these 42 actions = 318.5 million EUR
- No single project is comprehensively investigating every aspect of smart buildings
- There is no automated way to collect this kind of data – manual searches are necessary.

# Horizon 2020 Energy Info Days 2017



The poster features a vibrant orange-to-yellow gradient background. It is densely populated with small, semi-transparent icons representing various energy and sustainability themes, such as solar panels, wind turbines, bicycles, recycling symbols, light bulbs, and water droplets. On the left side, there is a vertical stack of larger, more prominent icons: a house with a solar panel, a bicycle, a recycling symbol, and a stylized energy tower. The text is positioned on the right side of the poster.

save the date  
**23-25 OCTOBER 2017**

**ENERGY INFO DAYS 2017**  
Horizon 2020 Work Programme 2018-2019

Brussels, Charlemagne Building

#H2020ENERGY





# EASME

Executive Agency for Small and Medium-sized Enterprises



<http://ec.europa.eu/easme/en/energy>

EASME on Twitter



@H2020EE • @PhilippeMoseley

Executive  
Agency  
for SMEs