



# EASME

Executive Agency for Small and Medium-sized Enterprises

## Horizon 2020 Energy Efficiency

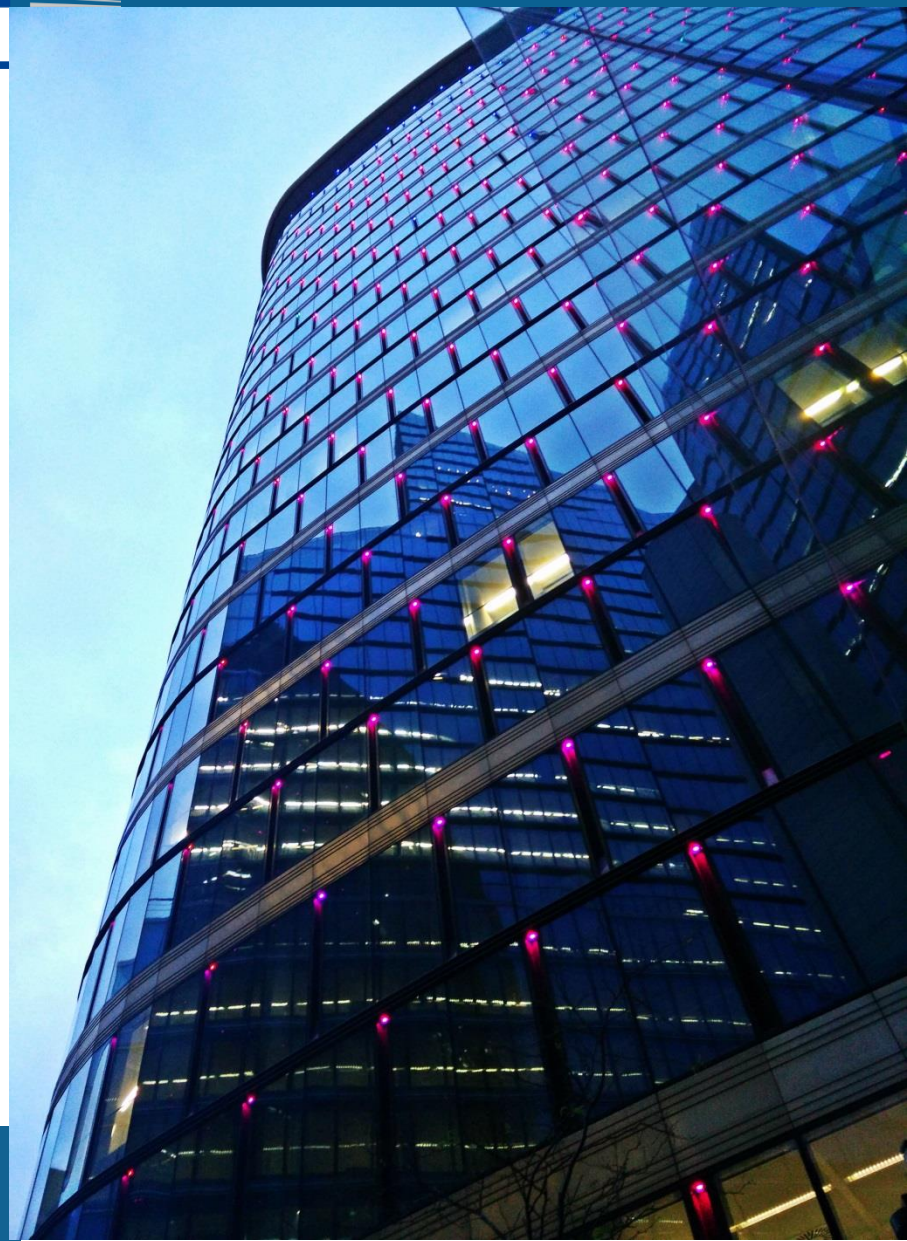


**Philippe MOSELEY**

Project Advisor

Horizon 2020 Energy Unit (Buildings)

*Executive  
Agency  
for SMEs*



## EASME's role within the European Commission

- Manage EU programmes
- Feed project outcomes into EU policymaking



# Step-by-step to energy efficient buildings

Energy Policies,  
Technologies & Practices

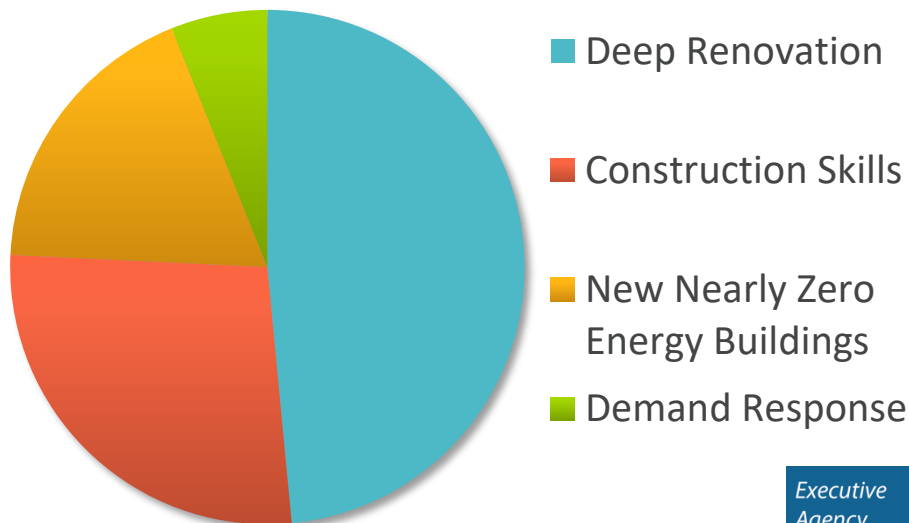


160 Intelligent Energy projects  
since 2004

Intelligent Energy  Europe

## Horizon 2020 Energy Efficiency

### Buildings sector projects



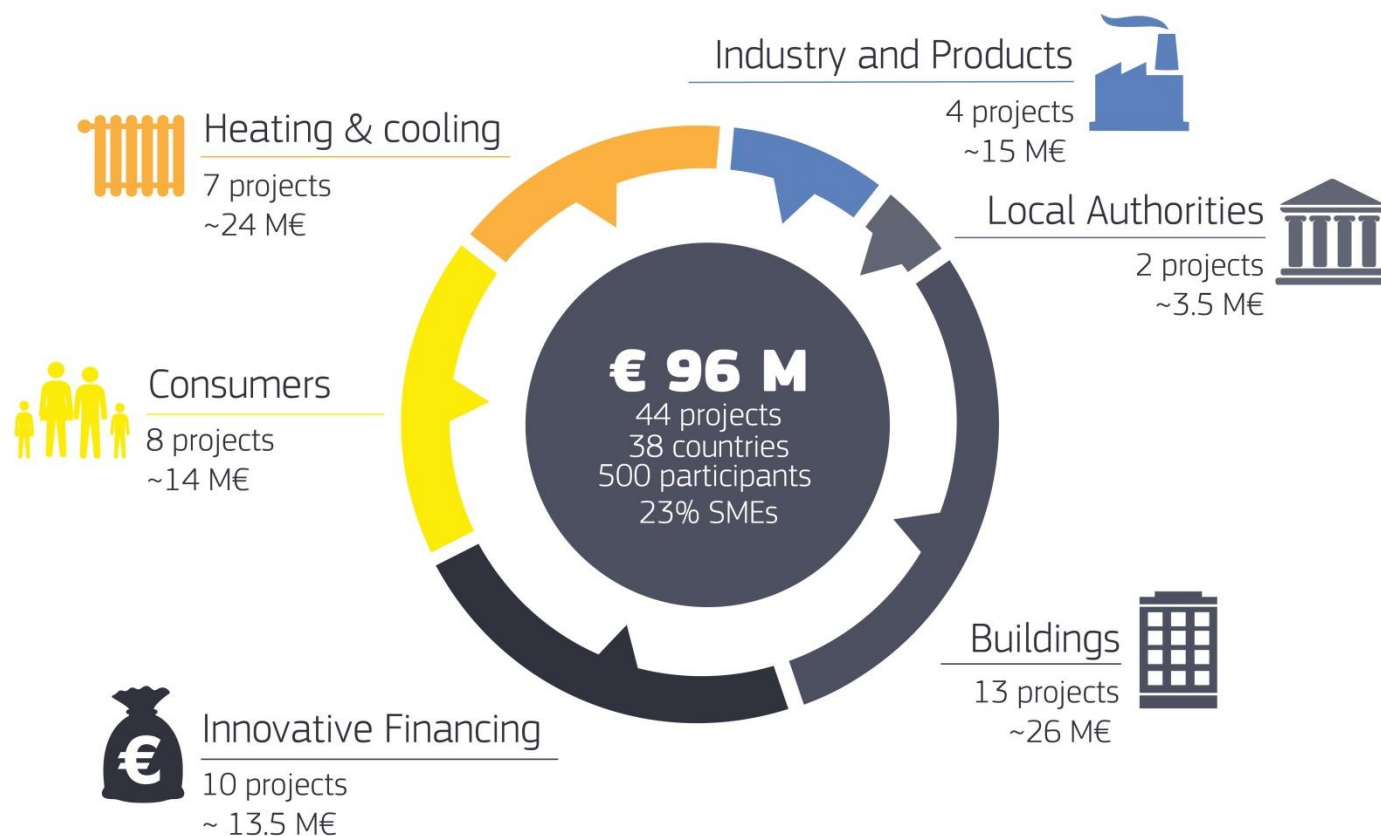
Executive  
Agency  
for SMEs



31 ongoing Horizon 2020  
buildings projects since 2014

HORIZON 2020 

# H2020 Energy Efficiency 2016 call results



# Concerted Actions

- Meetings of European implementing bodies
- Support implementation of each Directive
- Share knowledge & best practice, compare methods
- Monitor and report on policy impacts





# Concerted Action

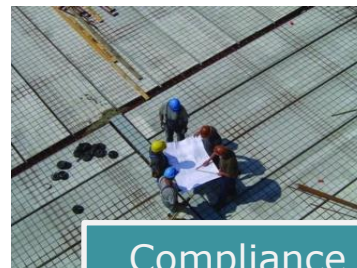
## Energy Performance of Buildings Directive



Certification



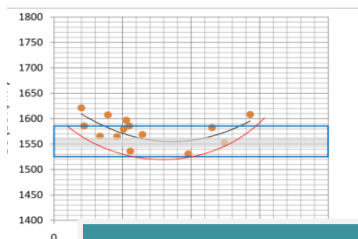
Training



Compliance



NZE Buildings



Cost optimality



Support



Inspections

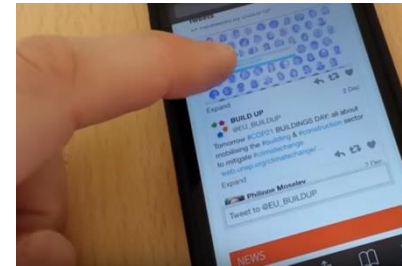
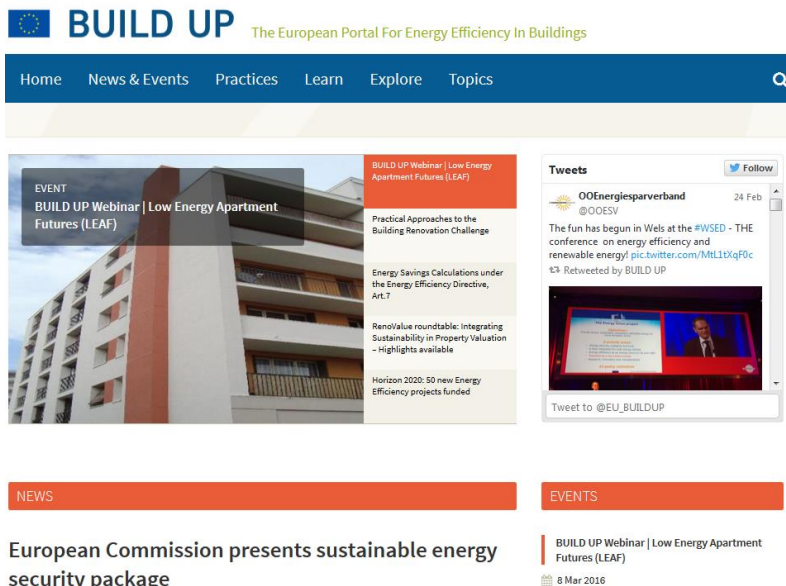
# Concerted Action

## Energy Performance of Buildings Directive



# BUILD UP - The European Portal for Energy Efficiency in Buildings

[www.buildup.eu](http://www.buildup.eu)



- Upload and collaborate
- Exchange best practice
- Latest news, research
- Find data tools, financing schemes, project case studies





4RinEU	Robust and Reliable technology concepts and business models for triggering deep Renovation of Residential buildings in EU	Beneficiaries	Projects	
BERTIM	Building energy renovation through timber prefabricated modules			
CHESS-SETUP	Combined HEat SyStem by using Solar Energy and heaT pUmPs			
DR-BOB	Demand Response in Block of Buildings			
IMPRESS	New Easy to Install and Manufacture PRE-Fabricated Modules Supported by a BIM based Integrated Design ProceSS			
InDeWaG	Industrial Development of Water Flow Glazing Systems			
MORE-CONNECT	Development and advanced prefabrication of innovative, multifunctional building envelope elements for MODular RETrofitting and CONNEctions			
MultiPACK	Demonstration of the next generation standardised integrated cooling and heating packages for commercial and public buildings based on environment-friendly carbon dioxide vapour compression cycles.			
P2Endure	Plug-and-Play product and process innovation for Energy-efficient building deep renovation			
Pro-GET-OnE	Proactive synergy of inteGrated Efficient Technologies on buildings' Envelopes			
Sim4Blocks	Simulation Supported Real Time Energy Management in Building Blocks			
ZERO-PLUS	Achieving near Zero and Positive Energy Settlements in Europe using Advanced Energy Technology			

<https://energy.easme-web.eu/>

# Horizon 2020 Energy Info Days 2017



The poster features a vibrant orange-to-yellow gradient background. It is densely populated with small, semi-transparent icons representing various energy and sustainability themes, such as solar panels, wind turbines, bicycles, light bulbs, water droplets, and recycling symbols. On the left side, there is a vertical stack of larger, more prominent icons: a house, a sun, a flower, a globe, a bicycle, a recycling symbol, and a stylized energy tower. The text is positioned on the right side of the poster.

save the date  
**23-25 OCTOBER 2017**

**ENERGY INFO DAYS 2017**  
Horizon 2020 Work Programme 2018-2019

Brussels, Charlemagne Building

#H2020ENERGY



# EASME

Executive Agency for Small and Medium-sized Enterprises



<http://ec.europa.eu/easme/en/energy>

EASME on Twitter



@H2020EE • @PhilippeMoseley

Executive  
Agency  
for SMEs