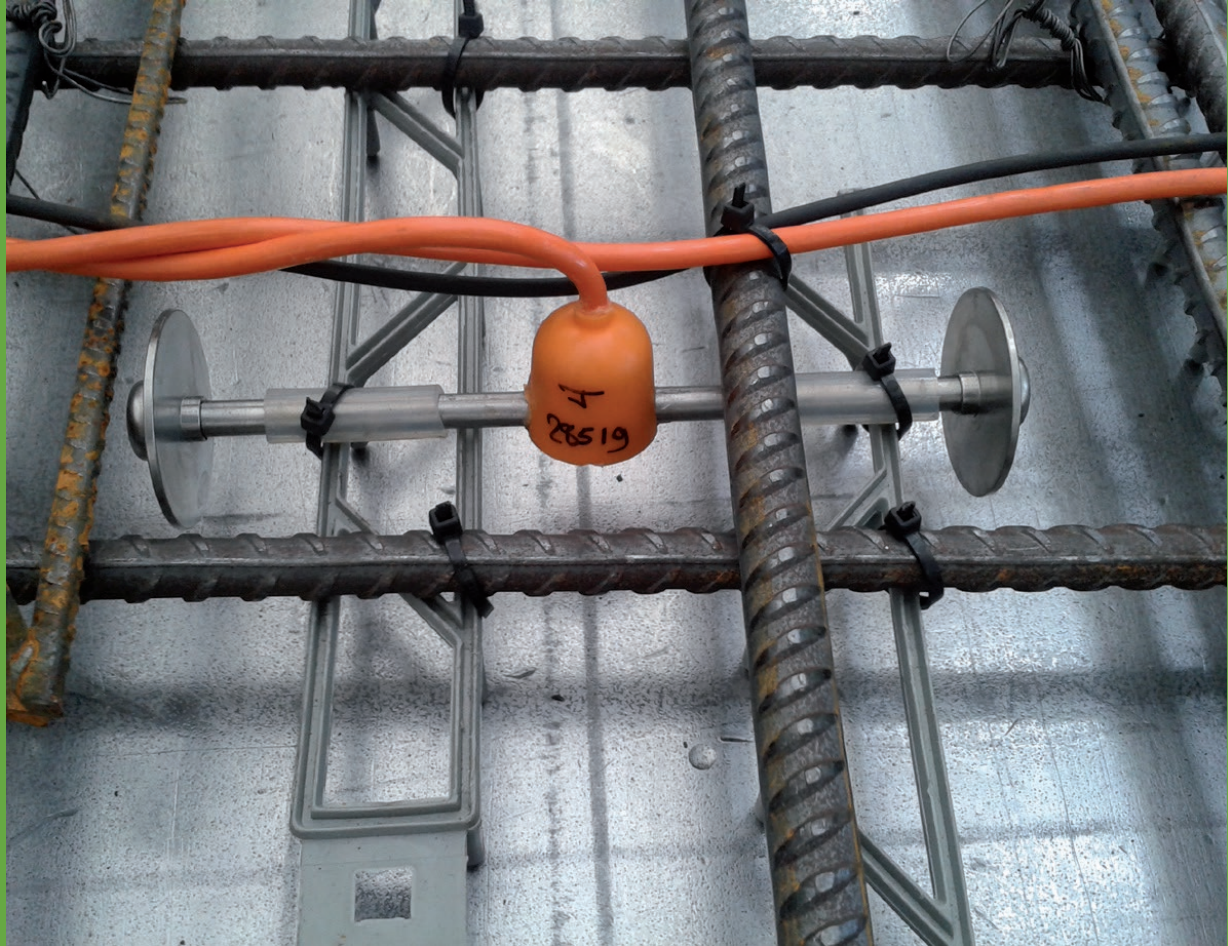
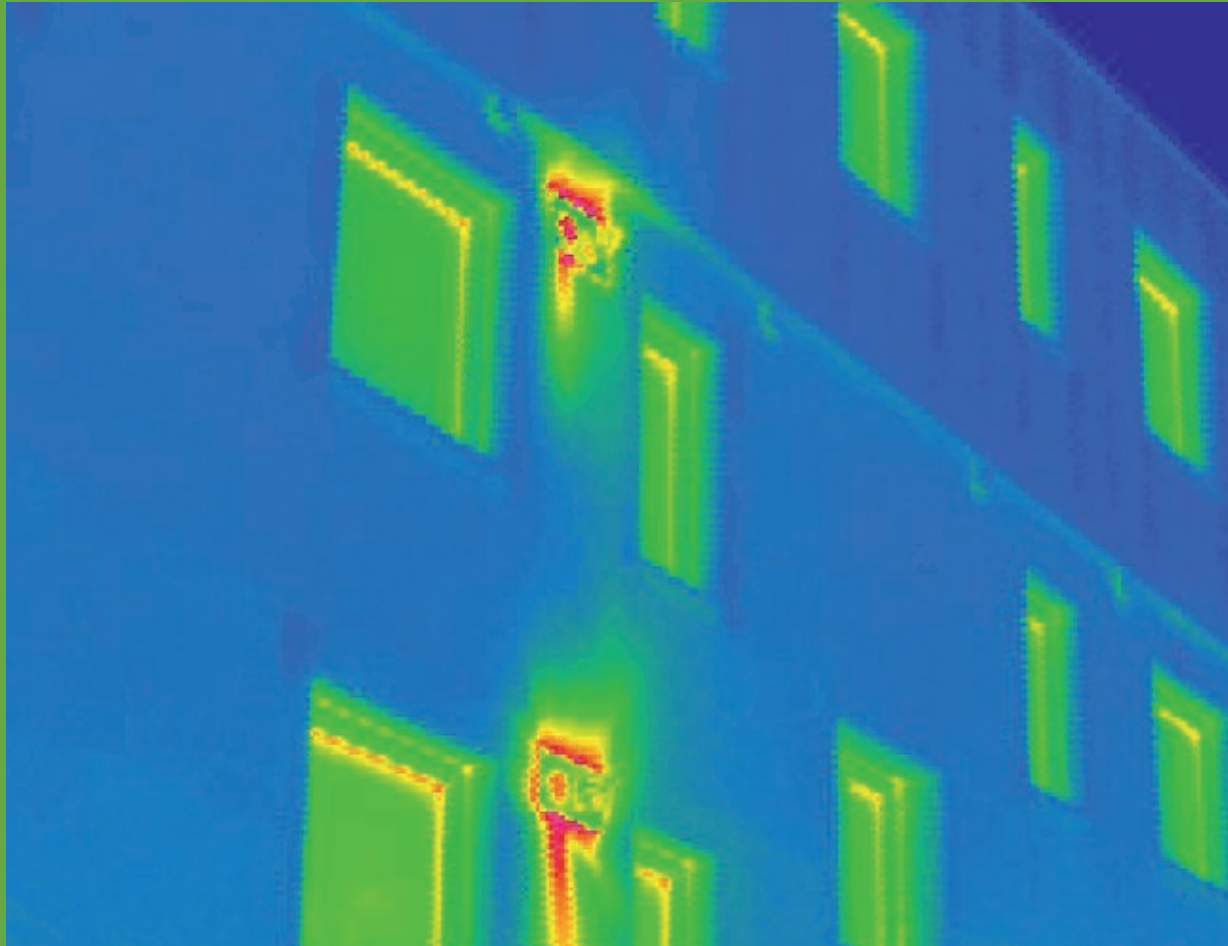




New tools for self-inspection and quality assurance

# BUILT2SPEC

Tools for the 21st Century Construction Worksite



## Boosting construction practices of the 21st century

Meeting EU energy efficiency targets for both new builds and retrofits will be much easier to manage in the near future. Construction professionals will now be able to access a variety of portable tools to facilitate on-site activities and quality compliance.

### Sensor-embedded building components

#### Energy efficiency quality checks

#### Building Information Modelling

#### Airtightness test tools

#### Indoor air quality tools

#### Thermal imaging tools

#### 3D and imagery tools

#### Acoustic tools



### Virtual Construction

### Management Platform



Coordinator:



Funded by:



Funded by the Horizon 2020 Research and Innovation Framework Programme of the European Union

Photo credits: Photo top © paulista/Shutterstock.com | Photos first row: Photo left © Nacho Mayayo, Diego Penas | Photo right © BSRIA | Second row: Photo left © Passive House Institute | Photo right © BLUE Industry and Science | Third row: Photo left © NUI Galway | Photo right © OHL

This project has received funding from the European Union's Horizon 2020 research and innovation programme under grant agreement No 637221. The sole responsibility for the content of this poster lies with the authors. It does not necessarily reflect the opinion of the European Union. Neither the EACI nor the European Commission are responsible for any use that may be made of the information contained therein.