

**Organisation name: RESALLIENCE**

**Contact name: Maxime VELAY**

**Email: maxime.velay@resallience.com**

**Telephone number: +33 6 20 15 23 06**

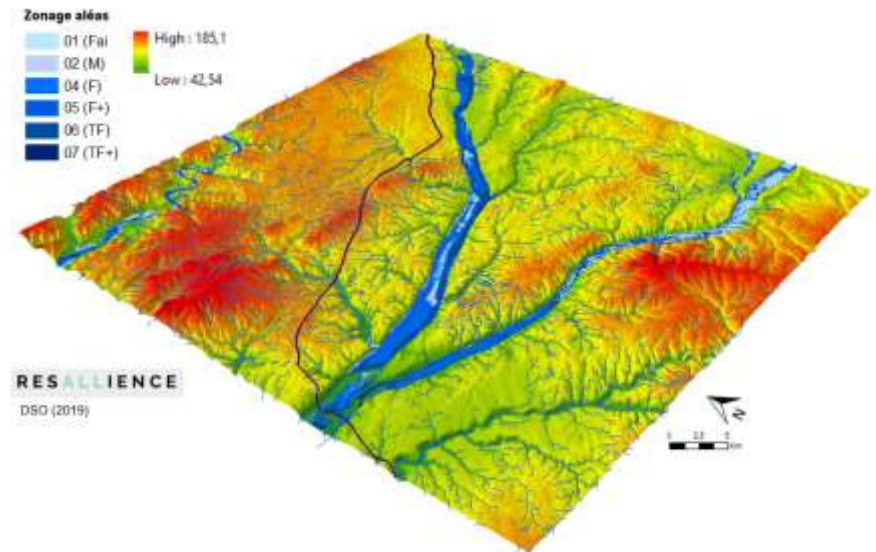
Targeted topics (EEB; B4E; EC; ES; SCC)

B4E, EC, ES, SCC	<p>Secure, clean and efficient energy</p> <p>Smart and clean energy for consumers</p> <p>Smart citizen-centred energy system</p> <p>Smart Cities and Communities</p>	Adaptation to climate change
------------------	--	------------------------------

# Competencies

**Adaptation of cities, territories, infrastructures and their uses, to climate change**

- *Geographical approaches*
  - Methodologies on resilience mapping
  - GIS design
  - Design of GIS platform



# Competencies

## Adaptation of cities, territories, infrastructures and their uses, to climate change

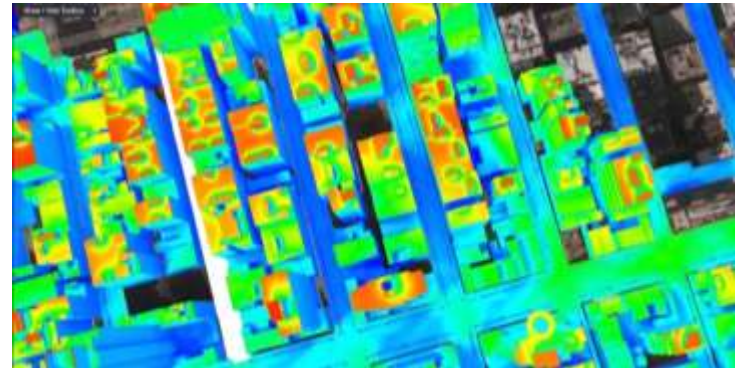
- *Modelling approaches*

- Functional modelling of infrastructure interactions/interdependencies

- Identification of domino effects

- Impact assessment of cost/repair time of failure scenarios

- Predictive models and stress tests



- *Toward collective and accepted scenario*

- Methodologies to design solution involving stakeholders

- Comparison and integration of solutions (investments, cost savings, etc.)