

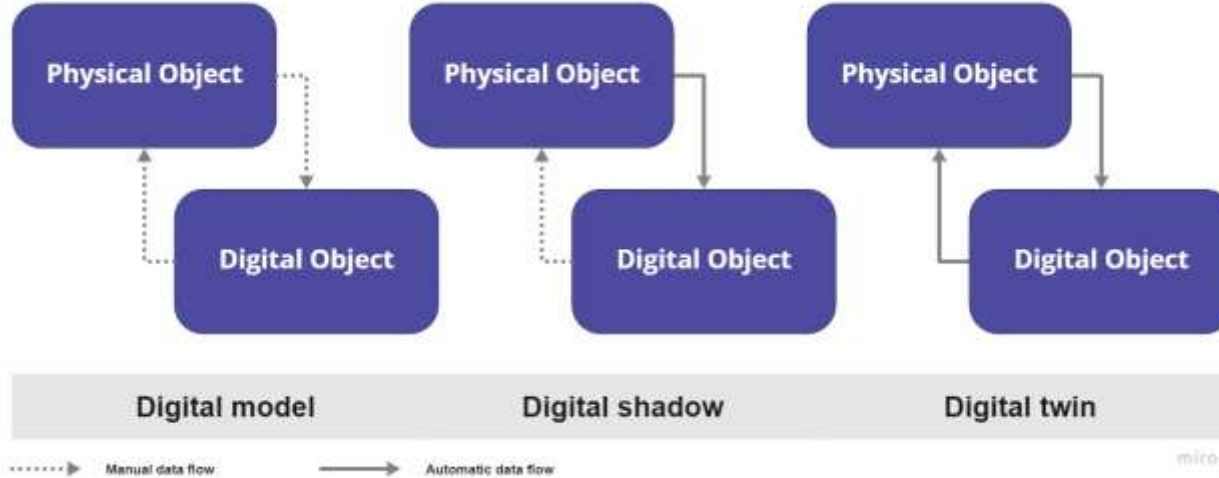
The Digital Twin work-flow in practice

Wojciech Teclaw



This project has received funding from the European Union's Horizon 2020 research and innovation programme under grant agreement N° 958450.

DIGITAL TWIN - DEFINITION



DIGITAL TWIN - DEFINITION

Digital twin
concept

Digital twin
model

Digital twin
framework

Digital twin
instance

Digital twin
prototype

Digital twin
platform

Digital twin eco-
system

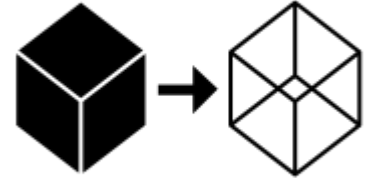


DIGITAL TWIN - ANALOGY

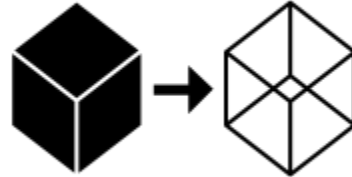
- 
- 
- 
- 
- 



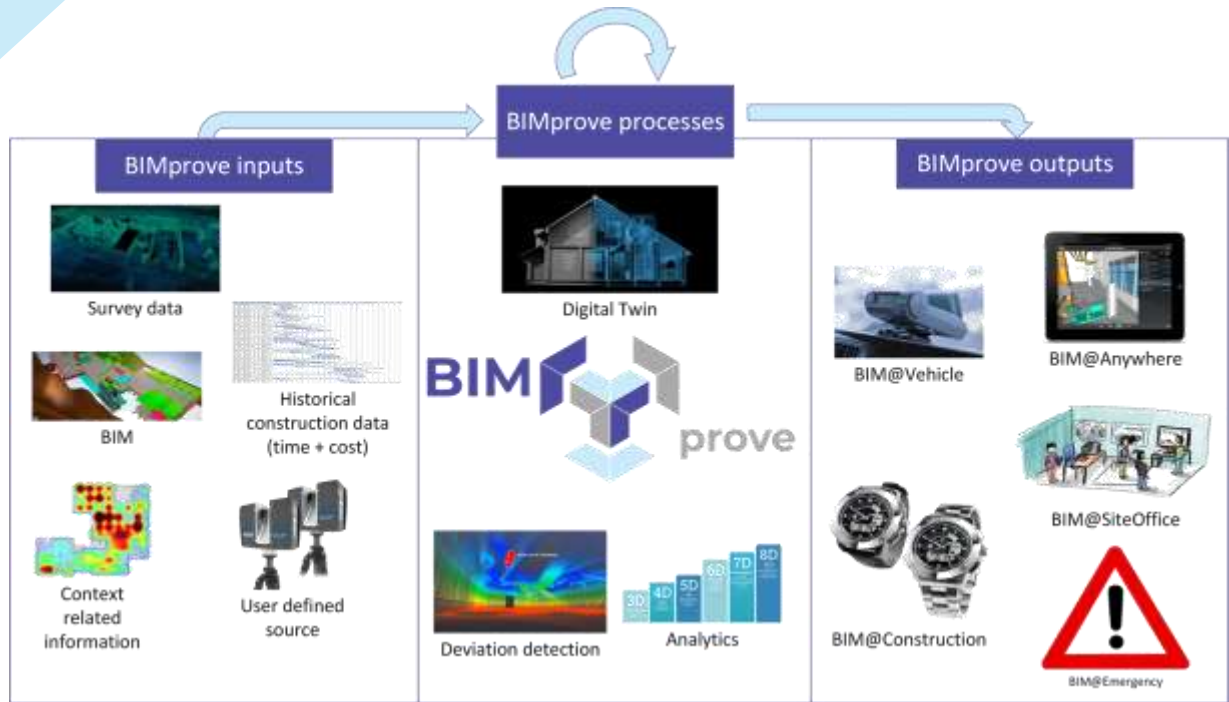
DIGITAL TWIN - IMPLEMENTATION



DIGITAL TWIN - IMPLEMENTATION



BIMPROVE CONCEPT



DT WORKFLOW

- What is a goal of a digital twin?



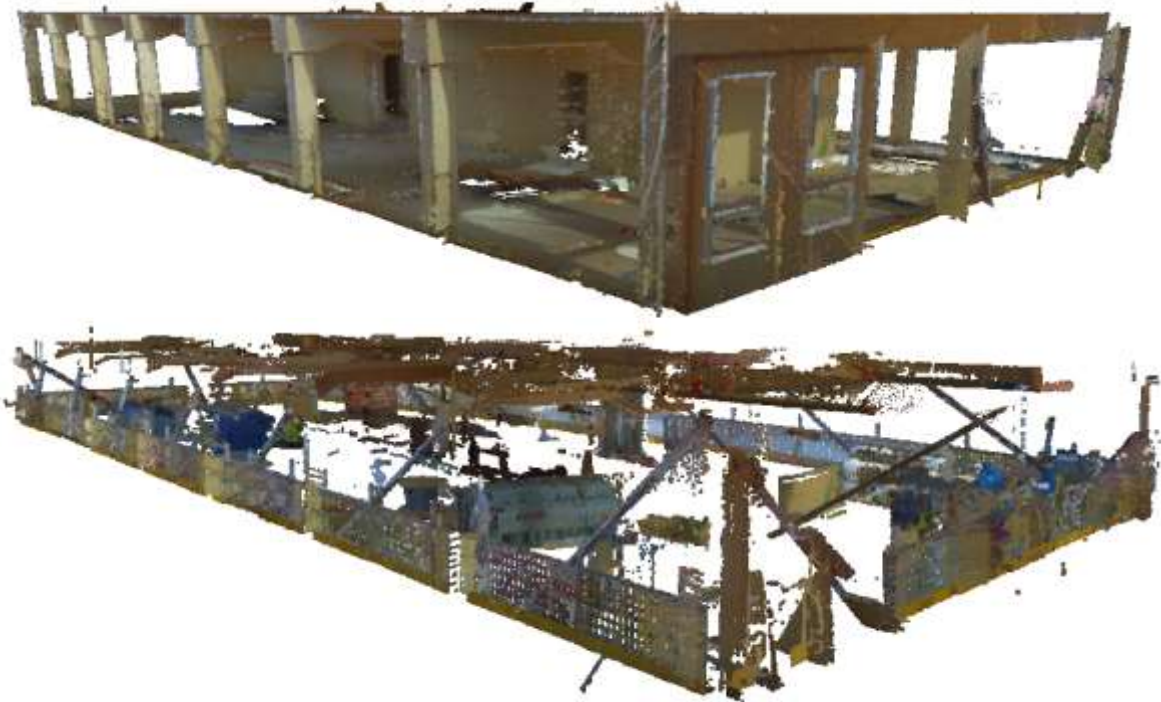
DT WORKFLOW

- Data gathering



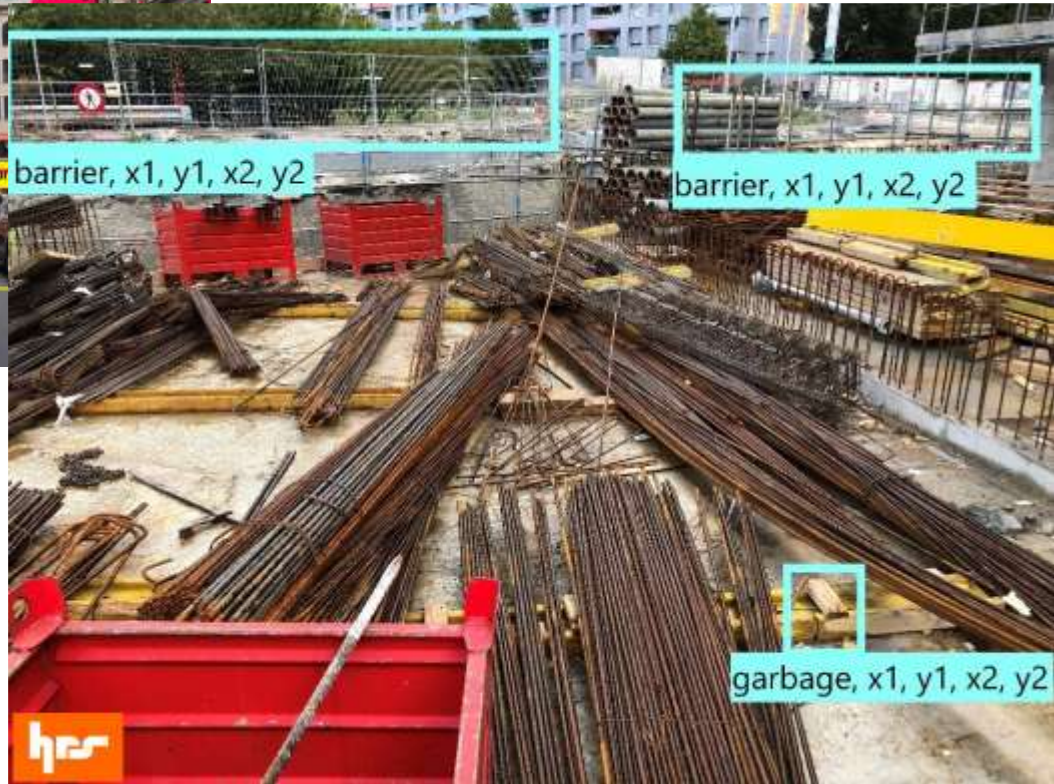
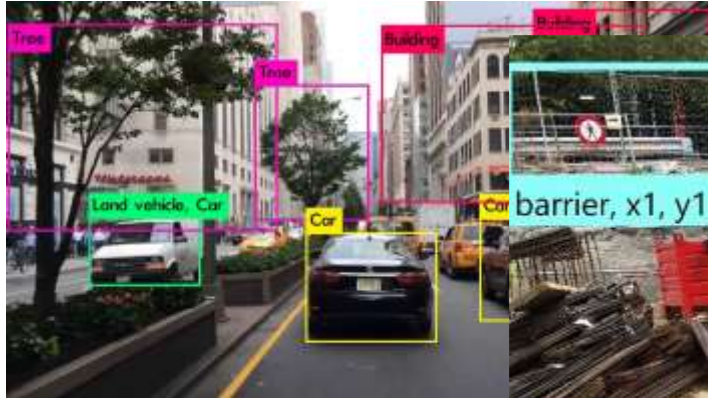
DT WORKFLOW

- Data preprocessing



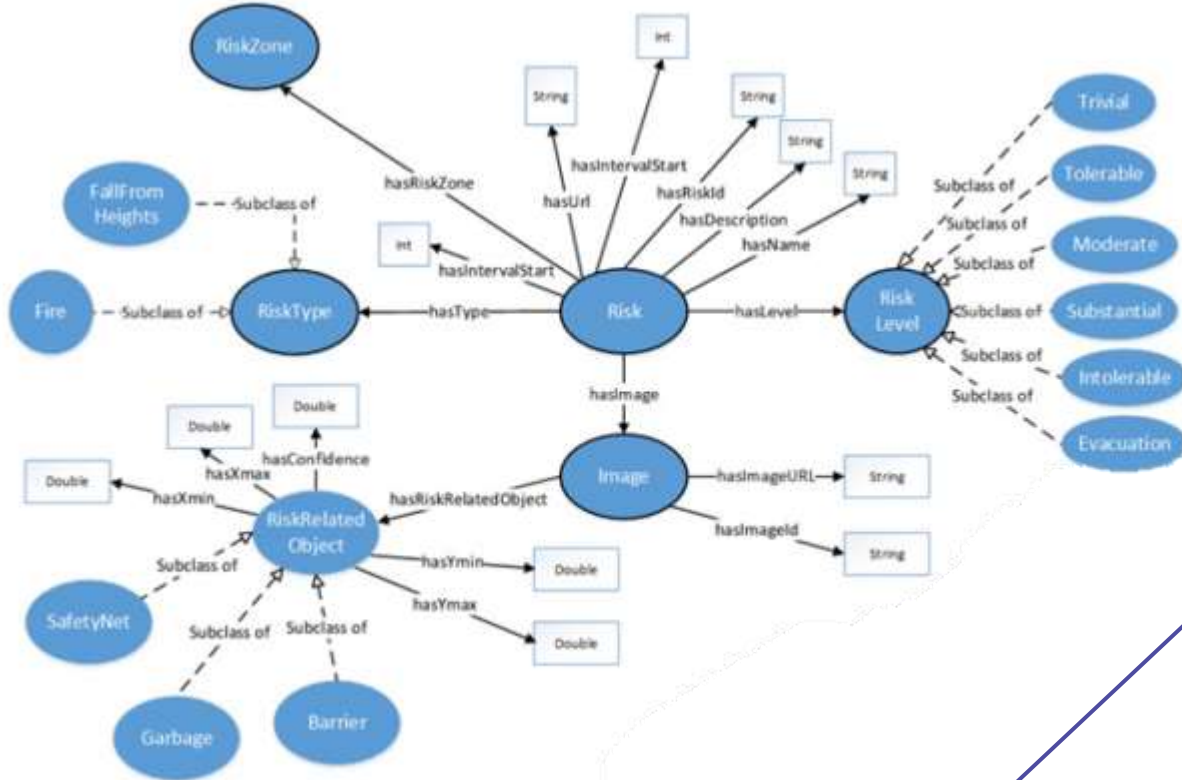
DT WORKFLOW

- Data integration



DT WORKFLOW

- Datastructure



DT WORKFLOW

- The usage of gathered data



LEARN MORE



<https://twitter.com/BIMproveEU>



<https://www.bimprove-h2020.eu/>



<https://www.linkedin.com/company/bimprove-project/>

<https://doi.org/10.5281/zenodo.4727839>

